

**ROCK DRILL**

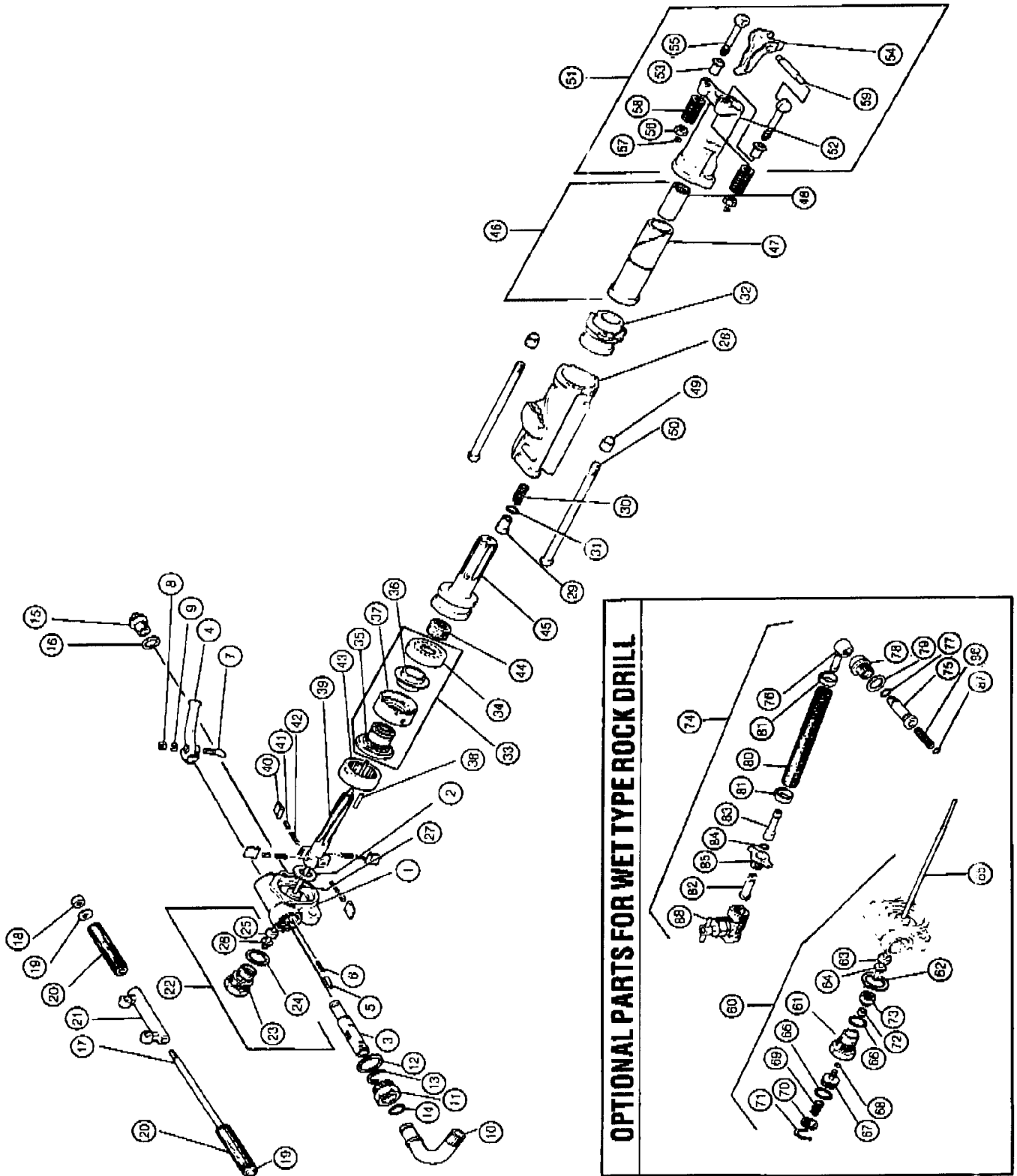
INDEX NO.	PART NO.	DESCRIPTION	QUAN. REQD.
1	7810-01-010C	Back Head Assy. (incl. 7825-01-015A)	1
2	7825-01-015A	Back Head Washer	1
3	7825-01-0020	Throttle Valve	1
4	7825-01-003C	Throttle Valve Handle	1
5	7825-01-004C	Throttle Valve Plunger	1
6	7898-17-0110	Throttle Valve Spring	1
7	7825-01-0060	Throttle Valve Bolt	1
8	9913-23-5000	Hex. Nut	1
9	9920-13-5000	Spring Washer	1
10	7825-01-008F	Hose Connection Tube	1
11	7825-01-0090	Hose Connection Cap	1
12	7825-01-0110	Hose Connection Gasket	1
13	7898-03-2268	Hose Connection Retainer	1
14	9954-80-0210	O-Ring 21	1
15	7825-02-0130	Back Head Set Screw	1
16	7825-02-0140	Set Screw Gasket	1
17	7820-05-0230	Handle Bolt	1
18	7811-05-0240	Handle Bolt Nut	1
19	9920-36-0000	Plain Washer	2
20	7811-05-0208	Handle Grip	2
21	7810-06-025A	Short D Handle	1
22	7825-11-0000	Blower Tube Group	1
23	7825-11-031A	Blower Tube Gland	1
24	7825-10-0330	Tube Gland Gasket	1
25	7825-10-0340	Tube Gasket	1
26	7825-10-0350	Tube Washer	1
27	7825-11-0360	Blower Tube	1
28	7820-21-050F	Cylinder	1
29	7825-20-063A	Blow Air Connection	1
30	7898-17-0220	Blow Air Connection Spring	1
31	9954-80-0120	O-Ring 12	1
32	7825-20-0690	Front Washer	1
33	7820-31-0000	Valve Group	1
34	7825-30-0710	Valve Chest Cover	1
35	7820-30-0720	Valve Guide	1
36	7820-31-0730	Valve	1
37	7825-30-0750	Valve Chest	1
38	7825-42-0810	Valve Key	1
39	7852-42-382A	Rifle Bar	1
40	7825-42-083C	Rotation Pawl	4
41	7828-40-084A	Plunger Pawl	4
42	7898-17-0840	Pawl Spring	4
43	7825-42-0860	Rotation Ratchet	1
44	7825-52-101B	Rifle Nut	1
45	7825-52-103B	Piston	1
46	7825-60-0000	Rotation Sleeve Group (7/8" x 3-1/4")	1
	7825-61-0000	Rotation Sleeve Group (7/8" x 4-1/4")	1
	7825-63-0000	Rotation Sleeve Group (1" x 4-1/4")	1
47	7825-60-114B	Rotation Sleeve Group (7/8" x 3-1/4")	1
	7825-61-114B	Rotation Sleeve Group (7/8" x 4-1/4")	1
		Rotation Sleeve Group (1" x 4-1/4")	1
48	7825-60-115D	Sleeve Bushing (7/8" x 3-1/4")	1
	7825-61-115D	Sleeve Bushing (7/8" x 4-1/4")	1
	7820-63-115D	Sleeve Bushing (1" x 4-1/4")	1
49	7825-70-121A	Cap Nut	2

INDEX NO.	PART NO.	DESCRIPTION	QUAN. REQD.
50	7875-70-1230	Through Bolt	2
51	7825-80-000A	Front Head Group (7/8" x 3-1/4")	1
	7825-81-0000	Front Head Group (7/8" x 4-1/4")	1
		Front Head Group (1" x 4-1/4")	1
52	7825-80-340B	Front Head Assy. (7/8" x 3-1/4")	1
		(incl. 7825-80-141B 2 pcs.)	
	7825-81-140A	Front Head Assy. (7/8" x 4-1/4")	1
		(incl. 7825-80-141B 2 pcs.)	
		Front Head Assy. (1" x 4-1/4")	1
		(incl. 7825-80-141B 2 pcs.)	
53	7825-80-141B	Front Head Bushing	2
54	7825-80-3320	Steel Holder (7/8" x 3-1/4")	1
	7825-80-132C	Steel Holder (7/8" x 4-1/4")	1
	7825-83-132C	Steel Holder (1" x 4-1/4")	1
55	7825-80-134C	Steel Holder Bolt	2
56	7825-80-135C	Steel Holder Nut	2
57	7898-03-010B	Steel Holder Clamp	2
58	7898-17-203A	Steel Holder Spring	2
59	7825-80-138A	Steel Holder Pin	1

**OPTIONAL PARTS FOR WET TYPE ROCK DRILL**

60	7825-10-0000	Water Tube Group	1
61	7825-10-031A	Water Tube Gland	1
62	7825-10-0330	Tube Gland Gasket	1
63	7825-10-0340	Tube Gasket	1
64	7825-10-0350	Tube Washer	1
65	7825-10-0360	Water Tube	1
66	9954-80-0180	O-Ring 18	2
67	7825-10-032F	Water Valve Piston	1
68	9954-80-0030	O-Ring 3	1
69	7898-17-0260	Water Valve Spring	1
70	7825-10-0380	Valve Spring Retainer	1
71	7825-10-039A	Water Valve Retainer Ring	1
72	7825-10-041A	Water Valve Seat	1
73	7825-10-042B	Water Valve Seat Retainer	1
74	7896-01-000C	Water Hose Connection Group	1
75	7896-01-031B	Water Connection Tube I	1
76	7896-01-0330	Water Connection tube II	1
77	9954-80-0100	O-Ring 10	1
78	7896-01-032A	Water Connection Nut	1
79	7825-02-0140	Set Screw Gasket	1
80	7898-07-4010	Water Hose	1
81	7896-01-0040	Hose Clamp Band	2
82	7896-01-035B	Water Hose Stem I	1
83	7896-01-036A	Water Hose Stem II	1
84	9954-81-0520	O-Ring 10520	1
85	7896-01-034A	Water Hose Stem Cap	1
86	7896-01-0100	Water Connection Screen	1
87	9954-80-0050	O-Ring 5	1
88	7896-01-020B	Water Valve Assy.	1

# TOYO TY-24C ROCK DRILL



TOOLS RENEWED, INC.  
 800-247-3639 FAX 860-665-9821