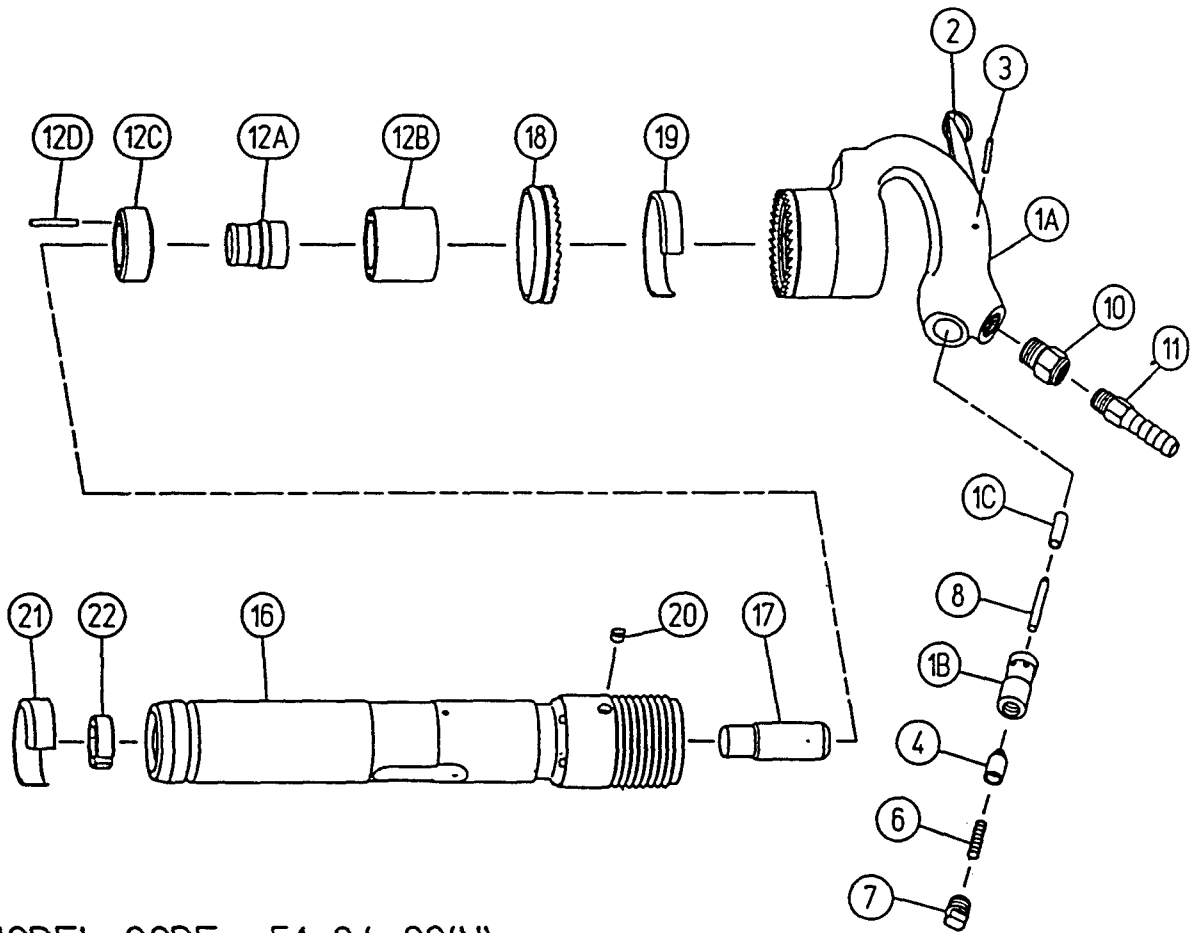


# TOKU A-90N/NB RIVETTING HAMMER Parts List z10463q1

A90N = STD / A90NB = JUMBO



MODEL CODE : 51-04-63(N)  
: 51-04-64(NB)

Symbol No.	Parts No.	Description	Q'ty Req.
01A	41-04-60-010	HANDLE	1
01B	41-04-60-060	THROTTLE VALVE BUSHING	1
01C	41-04-60-080	PUSH ROD SLEEVE	1
02	41-04-60-040	LEVER	1
03	13-04-01-058	LEVER PIN 4x21	1
04	41-04-60-050	THROTTLE VALVE	1
06	13-08-01-065	THROTTLE VALVE SPRING	1
07	13-49-05-019	THROTTLE VALVE CAP	1
08	13-04-01-056	THROTTLE VALVE PIN	1
10	13-47-04-030	SCREW BUSHING 1/2x3/8	1
11	13-48-03-040	HOSE STEM 3/8x1/2	1
12A	41-04-60-100	VALVE	1
12B	41-04-60-150	VALVE BOX	1
12C	41-04-60-140	VALVE SEAT	1
12D	13-04-01-057	VALVE KNOCK 4.5x35	1

Symbol No.	Parts No.	Description	Q'ty Req.
16	41-04-63-191	CYLINDER (For A-90N)	1
	41-04-64-191	CYLINDER (For A-90NB)	1
17	41-04-63-200	PISTON	1
18	41-04-60-300	CLUTCH	1
19	41-04-60-310	CLUTCH BAND	1
20	41-04-60-320	CLUTCH KEY	1
21	41-04-60-470	EXHAUST BAND	1
22	41-04-63-560	PISTON STOPPER (For A-90N)	1
	41-04-64-560	PISTON STOPPER (For A-90NB)	1

STD	T32019000	RETAINER
STD	T32150200	UPPER SLEEVE
STD	T32150400	LOWER SLEEVE
STD	T32150500	BUMPER
STD	T33219400	LOCK SPRING

JMB	T33219000	RETAINER
JMB	T33210100	UPPER SLEEVE
JMB	T33210300	LOWER SLEEVE
JMB	T33210400	BUMPER
JMB	T33219400	LOCK SPRING