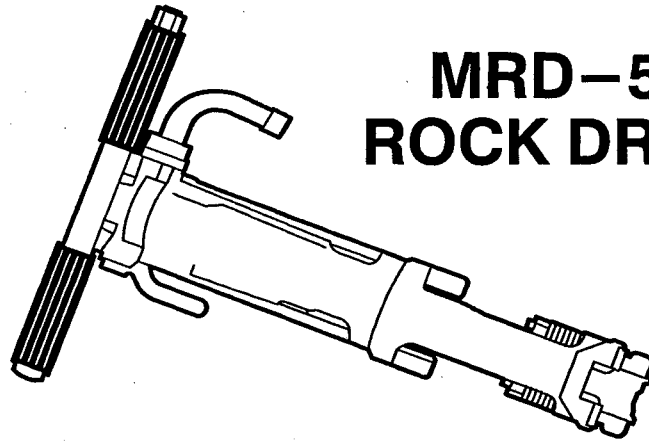


OPERATING INSTRUCTIONS AND PARTS LIST

MRD-55 ROCK DRILL



SLAR SU

GENERAL INFORMATION



**OPERATOR IS REQUIRED TO READ
ENTIRE INSTRUCTION MANUAL**

▲ WARNING

Always turn off and disconnect air supply from tool before replacing steel or removing steel retainer.

- COMPRESSED AIR SUPPLY (CFM [L/S] REQUIRED)**
 Use an air compressor with sufficient CFM (L/S) (Cubic Feet per Minute [Liters per Second]) delivery to operate the tool(s) at a pressure of 90 to 100 PSI (Pounds per Square Inch) (6.2 to 6.9) bar. RE: Chart for CFM (L/S) requirements.
- AIR PRESSURE (PSI [BAR])**
 Air pressure should be 90-100 PSI (6.2 to 6.9 bar) at the tool during operation. Higher pressure will increase kick back to operator, decrease performance, and may cause damage to tool. Lower pressure will reduce tool performance. It is important to realize that long lead hoses, manifolds and worn hose connections will cause a pressure drop. Use couplings and fittings of maximum I.D. size for the size hose being used. Reducers will restrict the air and result in less pressure at the tool.
- AIR HOSE AND FITTINGS**
 Inspect air hoses, fittings and gaskets for cuts and abrasions. Check that fittings, both in the tool and on the hose, are secure. Use safety wire or chain to secure the couplings at the tool to prevent hose whipping should the hose become detached while pressurized. Clear hoses of debris and excess water before attaching to tool. For hoses in excess of 1/2" (13mm) inside diameter install a proper flow limiting valve per government Health and Safety Requirements.

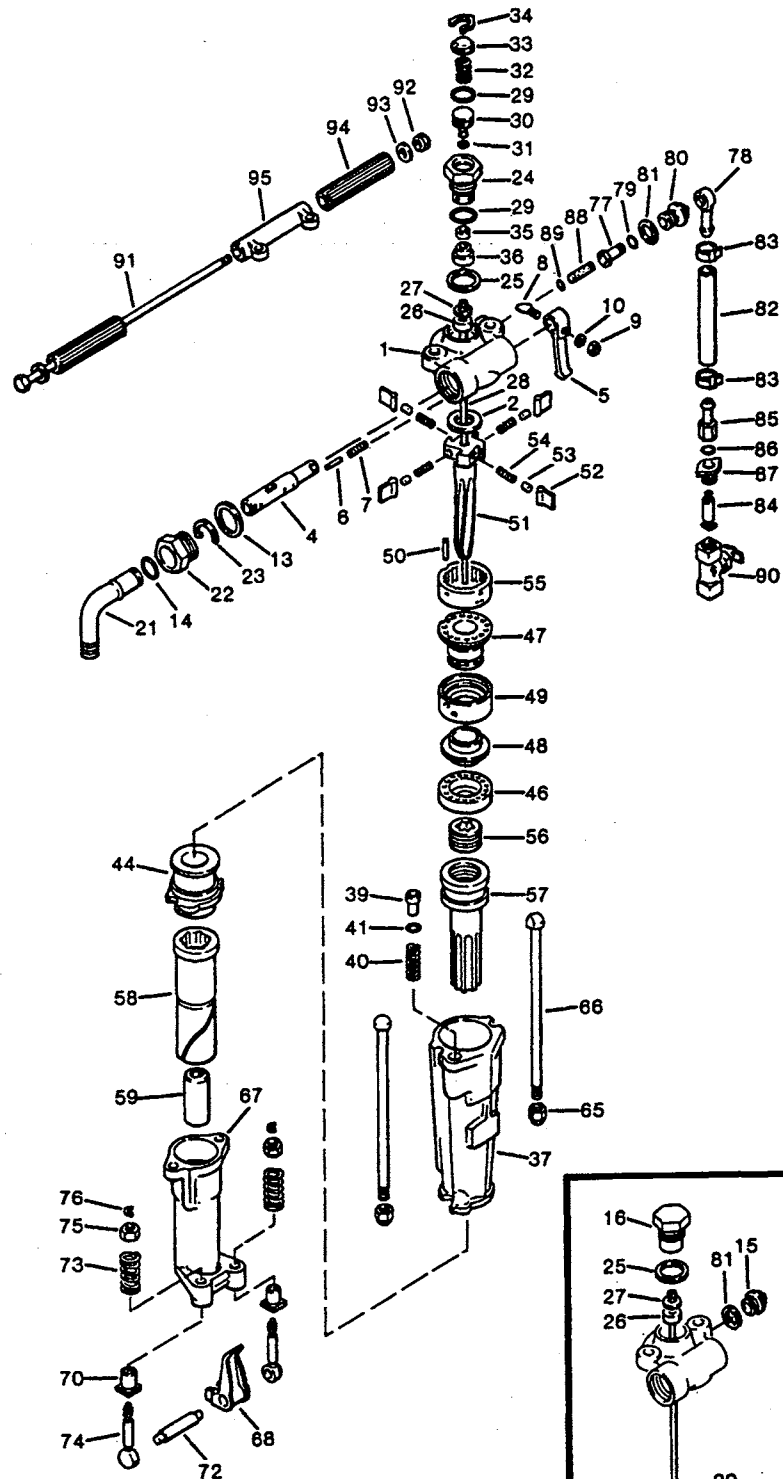
▲ WARNING

When blowing through a hose or air line, ensure that the open end is held securely. A free end will whip and may cause injury.

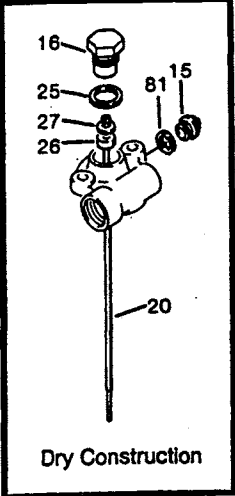
- LUBRICATION**
 The MRD-55 Rock Drill requires a constant feed line oiler.

Tools Renewed Inc
 800-247-3639
 Fax: 860-665-8155

MRD-55 ROCK DRILL ILLUSTRATION



Tools Renewed Inc
 800-247-3639
 Fax: 860-665-8155



PARTS LIST

INDEX NO.	PART NUMBER	QTY. REQ.	DESCRIPTION	INDEX NO.	PART NUMBER	QTY. REQ.	DESCRIPTION
1	250012-196	1	Backhead (inc. #14)	54	250012-242	4	Pawl Spring
2	250012-197	1	Backhead Washer	55	250012-243	1	Ratchet Ring
4	250012-198	1	Throttle Valve	56	250012-244	1	Rifle Nut
5	250012-199	1	Throttle Valve Handle	57	250012-245	1	Piston
6	250012-200	1	Throttle Valve Plunger	58	250012-246	1	Rotation Sleeve
7	250012-201	1	Throttle Valve Spring	59	250012-248	1	Sleeve Bushing 1" Hex x 4 1/4"
8	250012-202	1	Throttle Valve Bolt		250012-247	1	Sleeve Bushing 7/8" Hex x 4 1/4
9	250012-203	1	Throttle Valve Nut	65	250012-251	1	Side Rod Nut
10	250012-204	1	Throttle Valve Washer	66	250012-252	1	Side Rod
13	250012-207	1	Air Conn. Spring Washer	67	250012-253	1	Fronthead 4 1/4 Shank (inc #70)
14	250012-208	1	Air Conn. O-Ring	68	250012-255	1	Steel Retainer 1" x 4 1/4"
15	250012-209	1	Water Gland Plug		250012-254	1	Steel Retainer 7/8 x 4 1/4
16	250012-210	1	Blow Tube Gland	70	250012-256	1	Fronthead Bushing
20	250012-211	1	Blow Tube	72	250012-257	1	Retainer Pin
21	250012-205	1	Air Connection	73	250012-258	1	Retainer Spring
22	250012-206	1	Air Conn. Nut	74	250012-259	2	Retainer Bolt
23	250012-214	1	Air Conn. Retainer	75	250012-260	1	Retainer Nut
24	250012-215	1	Water Tube Gland	76	250012-261	1	Retainer Clamp
25	250012-217	1	Tube Gland Gasket	77	250012-262	1	Water Conn. Tube
26	250012-218	1	Tube Gasket	78	250012-264	1	Water Conn. Swivel
27	250012-219	1	Tube Washer				
28	250012-220	1	Water Tube	79	250012-265	1	O-Ring
29	250012-221	2	O-Ring	80	250012-266	1	Water Conn. Nut
30	250012-222	1	Water Valve Piston	81	250012-267	1	Water Conn./Plug Washer
31	250012-223	1	O-Ring				
32	250012-224	1	Water Valve Spring	82	250012-268	1	Water Hose
33	250012-225		Water Valve Spring Seat	83	250012-269	1	Hose Clamp
34	250012-226	1	Water Valve Retainer	84	250012-270	1	Swivel Hose Stem
35	250012-227	1	Water Valve Seat	85	250012-271	1	Swivel Hose Stem
36	250012-228	1	Water Valve Seat Retainer	86	250012-272	1	O-Ring
37	250012-229		Cylinder	87	250012-273	1	Swivel Hose Stem Nut
39	250012-230	1	Blowing Connection	88	250012-274	1	Water Conn. Tube
40	250012-231	1	Blowing Conn. Spring	89	250012-275	1	O-Ring
41	250012-232	1	O-Ring				
44	250012-233	1	Spacer	90	250012-276	1	Water Valve Complete
46	250012-234	1	Valve Chest Cover	91	250012-277	1	Handle Bolt
47	250012-235	1	Valve Guide	92	250012-278	1	Handle Bolt Nut
48	250012-236	1	Valve	93	250012-279	2	Handle Bolt Washer
49	250012-237	1	Valve Chest	95	250012-281	1	Short "D" Handle
50	250012-238	1	Dowel Pin	94	250012-280	2	Handle Grip
51	250012-239	1	Rifle Bar				
52	250012-240	1	Rotation Pawl	NS	250012-263	1	Water Hose Assy. (5277-A)
53	250012-241	1	Pawl Plunger	NS	250012-216	1	Water Tube Assy...(5224-A)
				NS	251315	1	1 Pt. Line Oiler (not included)

Tools Renewed Inc
 800-247-3639
 Fax: 860-665-8155