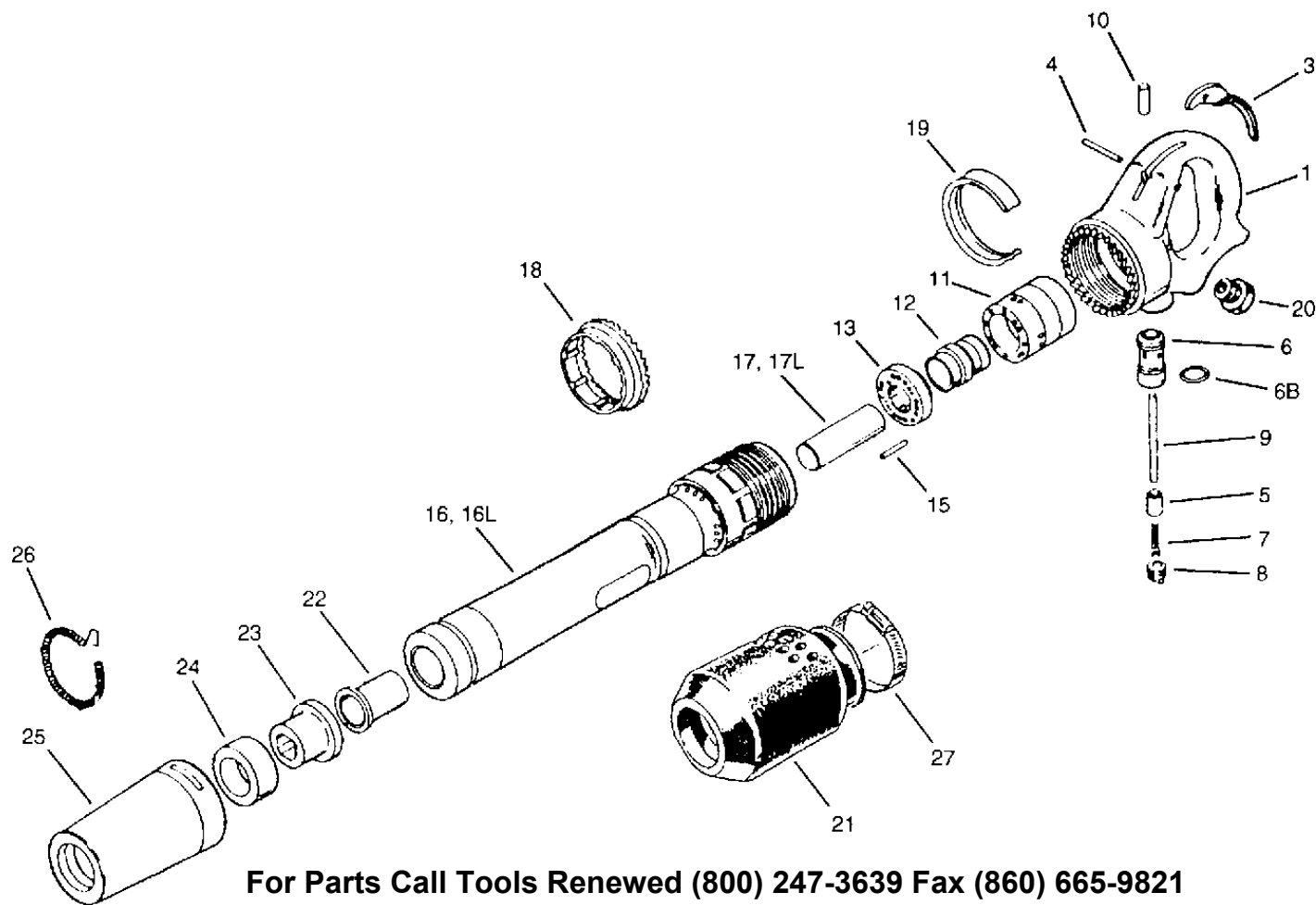


SULLAIR MRB-8(8" Stroke) AND MRB-11(11" Stroke) RIVET BUSTER



For Parts Call Tools Renewed (800) 247-3639 Fax (860) 665-9821

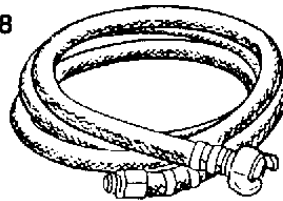
PARTS LIST

INDEX NO.	PART NUMBER	QTY. REQ.	DESCRIPTION	INDEX NO.	PART NUMBER	QTY. REQ.	DESCRIPTION
1	02250095-896	1	Handle w/Bushing, #10	21	02250094-915	1	Muffler
3	02250094-940	1	Throttle Lever	22	250029-072	1	Upper Sleeve Bushing (11X)
4	02250094-897	1	Throttle Lever Pin	23	250013-625	1	Lower Sleeve Bushing (11X)
5	02250094-898	1	Throttle Valve	24	250013-626	1	Bumper
6	02250094-899	1	Throttle Valve Bushing	25	250013-623	1	Retainer
6B	02250094-901	1	O-Ring	26	250013-594	1	Retainer Lock Spring
7	02250094-902	1	Throttle Valve Spring	27	02250094-916	1	Muffler Clamp
8	02250094-903	1	Throttle Valve Plug	28	Consult Factory	1	Hose, Whip
9	02250094-904	1	Push Pin	Assemblies (Not Shown)			
10	02250094-905	1	Push Pin Bushing	NS	02250094-938		Handle Assembly Complete, includes Items # 1, 3, 4, 5, 6, 6B, 7, 8, 9, 10, &20
11*	02250094-906	1	Valve Box	NS	02250094-939		Valve Assembly, includes Items # 11, 12, 13, &15
12*	02250094-907	1	Valve				
13*	02250094-908	1	Valve Cover Front				
15*	02250094-909	1	Valve Dowel Pin				
16	02250094-910	1	Barrel (MRB-8)				
16L	02250094-911	1	Barrel (MRB-11)				
17	02250094-917	1	Piston, 3" (MRB-8)				
17L	02250094-918	1	Piston, 4" (MRB-11)				
18	02250094-912	1	Handle Lock Ring				
19	02250094-913	1	Handle Lock Spring				
20	02250094-914	1	Handle Bushing				

* Recommended to purchase as assembly.

OPTIONAL ACCESSORIES

28



WHIP HOSE

For Parts Call Tools Renewed (800) 247-3639 Fax (860) 665-9821

ON – THE – JOB TROUBLESHOOTING (RIVET BUSTER)

PROBLEM	PROBABLE CAUSE	REMEDY
Tool Runs Sluggish	Low Air Pressure at Tool	Increase Pressure to 90–100 PSI (6.2 to 6.9 bar)
	Insufficient Air Flow (CFM [bar])	Check Hoses, etc. for Leaks
	Insufficient Lubrication	Add a Small Amount of Light–Weight Non–Detergent Oil into Hose.
Tool Runs Erratically	Osha (Velocity Valve) Tripping	Inspect Valve for Proper Sizing
	Foreign Material in Tool Inlet	Remove Foreign Material
Tool Will Not Run (Air Blows thru Exhaust)	Automatic Valve Stuck	Inspect components and repair as needed.
Tool Continues to Run	Throttle Valve Stuck	Inspect components and repair as needed.
Excessive Kick–Back	Air Pressure Too High at Tool	Reduce Pressure to 90–100 PSI (6.2 to 6.9 bar)
	Dull Cutting Edge on Steel	Replace with Sharp Steel
Rapid Wearing of Retainer	Collar of Steel Striking Retainer	Exert sufficient down pressure to keep point against work surface.
Steel Will not Fit Bushing	Steel Shank Does Not Match Bushing	Use Steel with correct shank.
Steel Will not Fit Retainer	Steel Shank Does Not Match Bushing	Use Steel with correct shank.

If suggested remedies fail to correct problem, disassembly and inspection must be performed to determine cause.

For Parts Call Tools Renewed (800) 247-3639 Fax (860) 665-9821