

# MPB-30, MCD-30 AND MTD-30 ILLUSTRATION

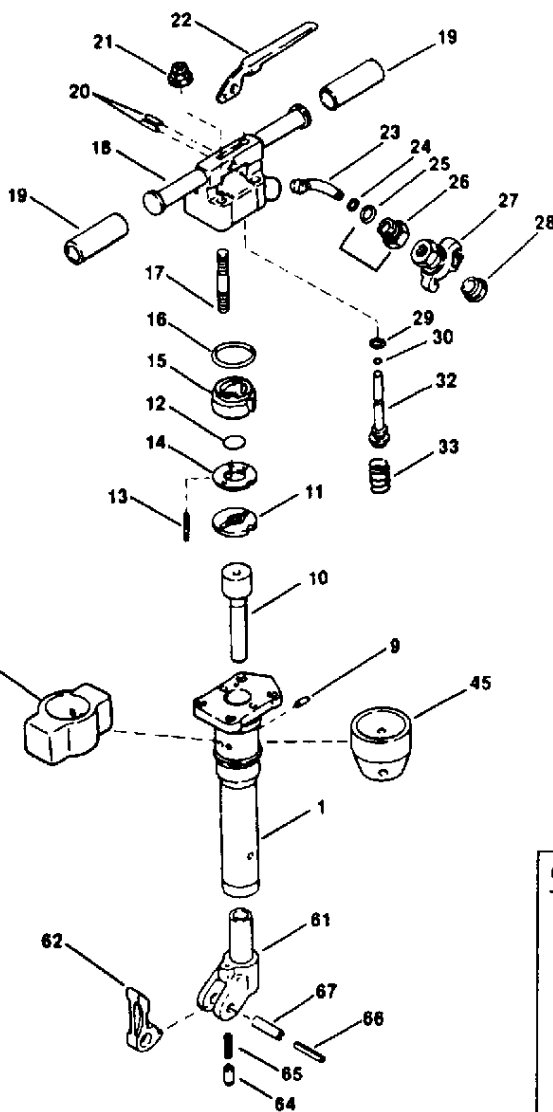
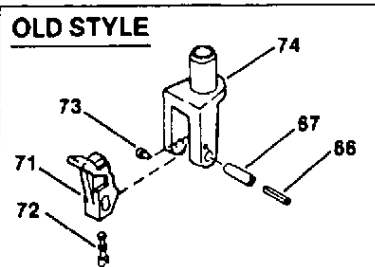
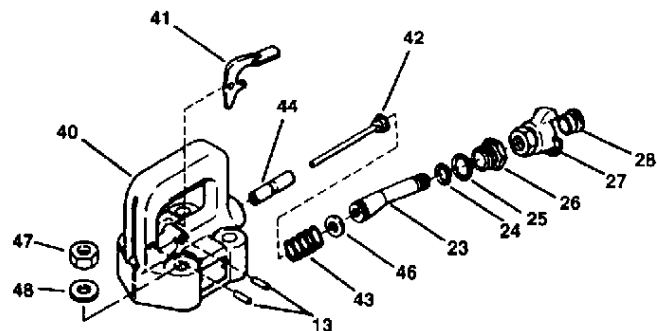


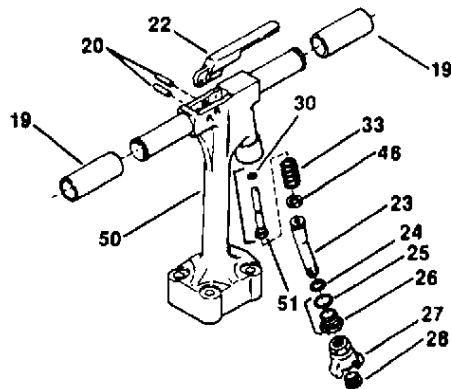
Illustration depicts current design. Refer to Parts List for interchangeability with other models.



## Clay Digger



## Trench Digger



# PARTS LIST

INDEX NO.	PART NUMBER	QTY. REQ.	DESCRIPTION	INDEX NO.	PART NUMBER	QTY. REQ.	DESCRIPTION
1	68722390	1	Cylinder	61	68722594	1	Bushing, 7/8" Hex w/Fronthead
8	68722453	1	Deflector, Exhaust		68722583	1	Bushing, 1" Hex w/Fronthead
9	68524129	1	Pin, Exhaust Deflector	62	68722885	1	Steel Retainer
10	68722388	1	Piston, for 1" Hex				
	68722513	1	Piston, for 7/8" Hex	64	68722737	1	Plunger, Steel Retainer
11	68722385	1	Seat, Valve	65	68MF0707	1	Spring, Retainer Plunger
12	68ML3426	1	Disc, Valve	66	68524011	1	Pin, Roll-Small Retainer
13	68VV5630	1 or 3	Pin, Valve	67	68521668	1	Pin, Roll-Large Retainer
14	68722384	1	Guide, Valve				
15	68722386	1	Chest, Valve				
16	68CJ0034	1	O-Ring, 2.225ID x .210W (70)				
17	68722414	4	Stud, Backhead				
18	68722389	1	Backhead, Bare				
19	68722463	2	Grip, Rubber Handle	71	68722543	1	Retainer, Steel
20	68723013	2	Pin, Throttle Lever	72	68721329	1	Plunger, Steel Retainer
21	68VE9016	4	Nut, Backhead Stud	73	68721330	1	Stop, Steel Retainer
22	68721676	1	Lever, Throttle	74	780144	1	Kit, New Retainer, 7/8" Hex
23	68722381	1	Swivel, Air Inlet		780145	1	Kit, New Retainer, 1" Hex
24	68CJ0012	1	O-Ring, .595ID x .106W (70)				
25	68CJ0018	1	O-Ring, .906ID x .142W (70)				
26	68722382	1	Nut, Air Inlet Swivel				
27	68524154	1	Coupling, Universal Hose	40	68722457	1	Handle, Clay Digger-Bare
28	250015-228	1	Washer, Hose Coupling	41	68722460	1	Trigger, MCD
29	68CJ0820	1	O-Ring, .787ID x .079W (70)	42	68722779	1	Valve, Throttle-MCD
30	68CJ0005	1	O-Ring, .225ID x .075W (70)	43	68722225	1	Spring, Throttle Valve
				44	68722227	1	Bushing, Throttle Valve Guide
32	68722785	1	Valve, Throttle	45	68722600	1	Deflector, Exhaust
33	68MR1600	1	Spring, Throttle Valve	46	68548110	1	Washer
				47	68VE8162	4	Nut
				48	685481216	4	Washer
<b>Fronthead Assemblies</b>				<b>Old Style</b>			
	68780144	1	Fronthead Assy, 7/8" Hex (Includes Items 61 thru 67)	71	68722543	1	Retainer, Steel
	68780145	1	Fronthead Assy, 1" Hex (Includes Items 61 thru 67)	72	68721329	1	Plunger, Steel Retainer
				73	68721330	1	Stop, Steel Retainer
				74	780144	1	Kit, New Retainer, 7/8" Hex
					780145	1	Kit, New Retainer, 1" Hex
				<b>Clay Digger</b>			
				40	68722457	1	Handle, Clay Digger-Bare
				41	68722460	1	Trigger, MCD
				42	68722779	1	Valve, Throttle-MCD
				43	68722225	1	Spring, Throttle Valve
				44	68722227	1	Bushing, Throttle Valve Guide
				45	68722600	1	Deflector, Exhaust
				46	68548110	1	Washer
				47	68VE8162	4	Nut
				48	685481216	4	Washer
				<b>Trench Digger</b>			
				45	68722600	1	Deflector, Exhaust
				50	68722456	1	Handle, Trench Digger-Bare
				51	68722783	1	Valve, Throttle, MTD

## REPAIR TOOLS FOR MPB-30, MCD-30 AND MTD-30

PART NUMBER	DESCRIPTION	APPLICATION
68M2882A	Plate, Press Mounting	To hand cylinder from hydraulic press bed when removing chuck bushings.
68722721	Tool, Chuck Removal MPB-30	To press out chuck bushing.
68M705291D6-7/8"	Tool, Chuck Inserting 7/8" hex	To press in 7/8" hex bushing.
68M705291D6-1"	Tool, Chuck Inserting 1" hex	To press in 1" hex bushing.
Local Purchase	Metric Wrenches	Disassembly and Assembly.

NOTE: All components are Metric except external air inlet swivel Threads which are NPT

For Parts & Repairs Call Tools Renewed (800) 247-3639 Fax(860-665-9821

## ON-THE-JOB TROUBLE SHOOTING

### MPB-30 PAVING BREAKER, MCD-30 CLAY DIGGER AND MTD-30 TRENCH DIGGER

PROBLEM	PROBABLE CAUSE	REMEDY
Tool Runs Sluggish	Low Air Pressure at Tool	Increase Pressure to 90-100 PSI (6.2 to 6.9 bar)
	Insufficient Air Flow (CFM [bar])	Check Hoses, etc. for Leaks
	Automatic Valve Clogged	Flush Tool with Mixture of Oil and Diesel Fuel
	Insufficient Lubrication	Add a Small Amount of Light-Weight Non-Detergent Oil into Hose. Refill oil reservoir.
Tool Runs Erratically	Osha (Velocity Valve) Tripping	Inspect Valve for Proper Sizing
	Foreign Material in Tool Inlet	Remove Foreign Material
	Automatic Valve Sticking	Flush Tool With Mixture of Oil and Diesel Fuel. Reduce Amount of Oil/Moisture to Tool
Tool Will Not Run (Air Blows thru Exhaust)	Automatic Valve Stuck	Flush Tool with Mixture of Oil and Diesel Fuel
Tool Continues to Run	Throttle Valve Stuck	Flush Tool with Mixture of Oil and Diesel Fuel
Excessive Kick-Back	Air Pressure Too High at Tool	Reduce Pressure to 90-100 PSI (6.2 to 6.9 bar)
	Dull Cutting Edge on Steel	Replace with Sharp Steel
Difficulty Removing Steel from Work	Wedge Action of Point Negated	Break Closer to Open Edge
	Improper Cutting Edge Profile	Select Appropriate Edge
Slow Penetration	Improper Down Pressure	Apply Sufficient Down Pressure
If suggested remedies fail to correct problem, disassembly and inspection must be performed to determine cause.		

For Parts & Repairs Call Tools Renewed (800) 247-3639 Fax(860-665-9821