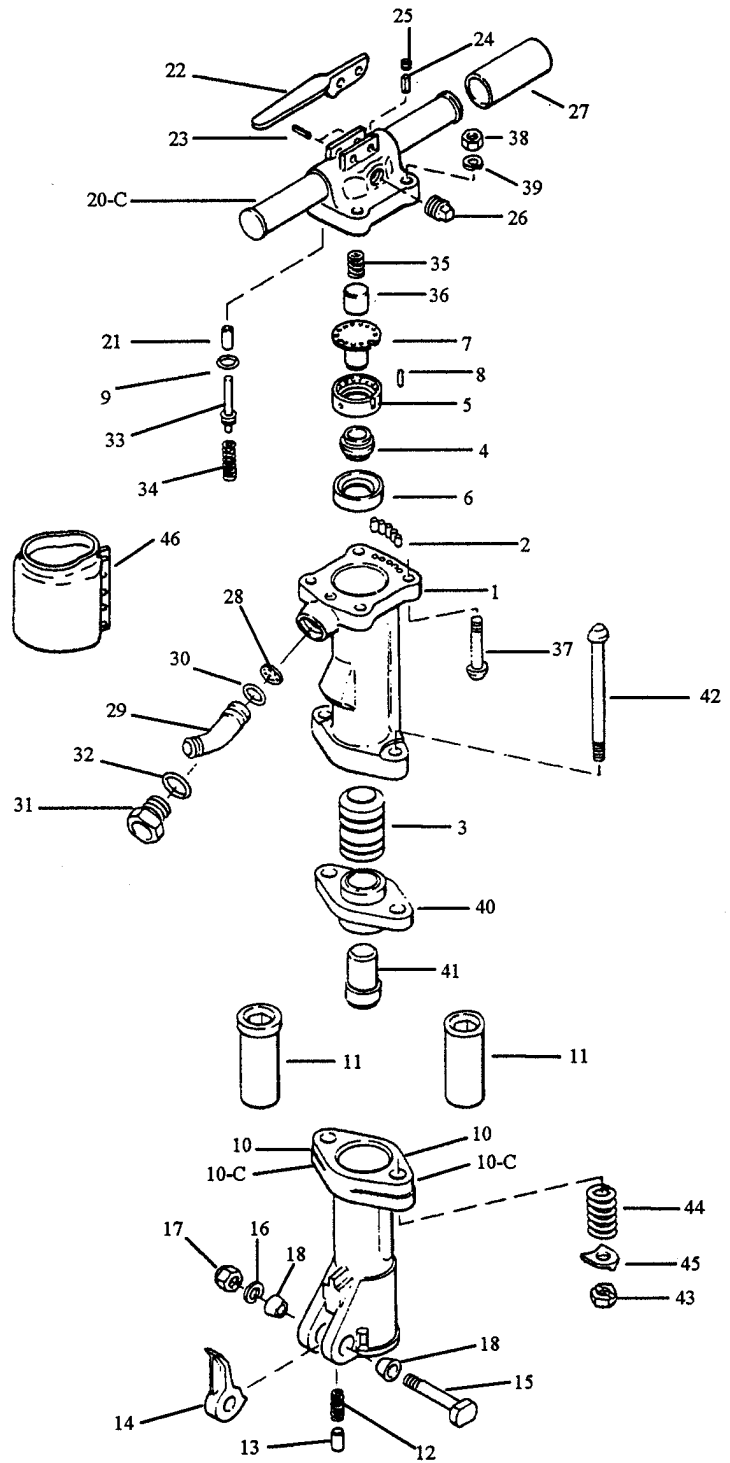




# K 123R Redline

Tools Renewed 800-247-3639 Fax: 800-665-9821





# K123R Redline Paving Breaker

## Parts List

Item	Kent P/N	Qty	Description	Item	Kent P/N	Qty	Description
<u>Cylinder</u>							
1	K04036	1	Cylinder				
2	K04039	5*	Cylinder Nylon Plug	20-C	K04035	1	<u>Handle</u> Backhead Complete (Before SIN 60000)
3	K00043	1	Piston		K18948	1	Backhead Complete (After SIN 60000)
4	K05700	1*	Automatic Valve				Throttle Lever Bushing (Item 21 eliminated after SIN 60000)
5	K05806	1	Valve Chest	21	K01294	1*	Throttle Lever
6	K05805	1	Valve Chest Seat	22	K01296	1*	Throttle Lever Pin (Before SIN 60000)
7	K05704	1	Valve Guide Stem	23	K01292	1*	Throttle Lever Pin (After SIN 60000)
8	K05701	1*	Valve Chest Dowel		K18949	1	Throttle Lever Pin (After SIN 60000)
9	K05706	1*	Valve Port "O"-Ring				Oil Control Filter
<u>Front Head</u> (Items 10-C thru 11 before S/N 57110)				24	K00591	1*	Oil Control Plug
10-C	KBM04038	1	Front Head Complete 1-1/8 Hex	25	K00731	1*	Oil Plug (Before SIN 60000)
10	KBM02020	1	Front Head w/K01400 Bushing	26	K02027	1*	Oil Plug (After SIN 60000)
11	K01400	1*	Front Head Bushing 1-1/8 Hex	27	K01293	1*	Grip
10-C	KBM04037	1	Front Head Complete 1-1/4 Hex		K03019	1*	<u>Assembly Parts</u>
10	KBM02023	1	Front Head w/K01401 Bushing	28	K00508	1*	Air Inlet Screen
11	K01401	1*	Front Head Bushing 1-1/4 Hex	29	KBM01300	1*	Air Inlet Swivel(Inc.1639)
<u>Front Head</u> (Items 10-C thru 11 after S/N 57110)				30	K01639	1	"O"-Ring Inlet Swivel
10-C	KBM18776	1	Front Head Complete 1-1/8 Hex	31	KBM01295	1*	Air Inlet Swivel Nut (Inc. 1937)
10	KBM18777	1	Front Head w/K18778 Bushing	32	K01937	1*	Air Inlet Nut "O"-Ring
11	K18778	1*	Front Head Bushing 1-1/8 Hex	33	KBM01285	1*	Throttle Valve w/"O"-Ring (Inc. 1613,1546 "O"-Rings)
10-C	KBM18779	1	Front Head Complete 1-1/4 Hex	34	K01291	1*	Throttle Valve Spring
10	KBM18780	1	Front Head w/K18781 Bushing	35	K01298	1*	Plunger Spring(Backhead)
11	K18781	1*	Front Head Bushing 1-1/4 Hex	36	K01297	1*	Plunger (Backhead) (Item 36 eliminated after S/N 60000)
	KI 8786	1	Front Head Bare	37	KBM01126	1	Backhead Bolt Assembly (Inc. 1125 & 9847)
12	K01288	1*	Retainer Spring	38	K01274	1	Backhead Bolt Nut
13	K01287	1*	Retainer Plunger	39	K09847	1*	Backhead Bolt Lockwasher
14	K01136	1*	Retainer	40	K02021	1	Tappet Seat
15	KO 1132	1*	Retainer Bolt	41	K00061	1	Tappet
16	K03997	1*	Retainer Bolt Lockwasher	42	KBMO1128	1	Front Head Bolt (Inc. 1129)
17	K00954	1*	Retainer Bolt Nut	43	K01129	1*	Front Head Bolt Nut
18	K05719	2*	Retainer Bolt Bushing (Rubber)	44	K01290	1*	Front Head Bolt Spring
			Standard	45	K01289	1	Front Head Bolt Lockwasher
NS	K01131	2	Retainer Bolt Bushing (Steel) Optional				
				<u>Accessory</u>			
				46	KBM00189	1	Muffler (123R)

\*Depicts Interchangeable Parts of 123R and 125R Redline Tools