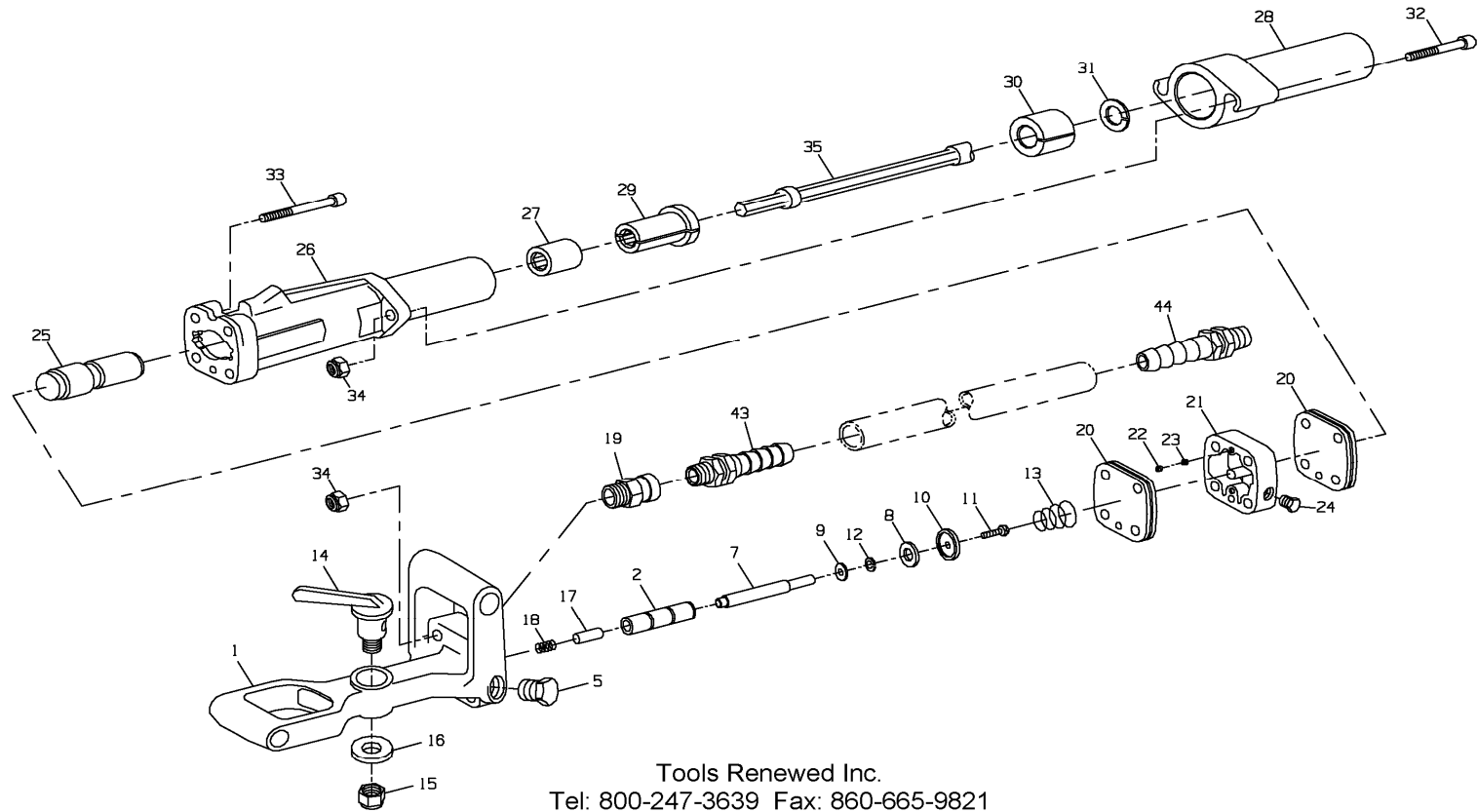


Ingersoll-Rand MT-4 Tie Tamper

Ingersoll-Rand MT4 Tie Tamper



Tools Renewed Inc.
Tel: 800-247-3639 Fax: 860-665-9821
Email: sales@toolsrenewed.com
Web: www.toolsrenewed.com

Ingersoll-Rand MT-4 Tie Tamper

Index	Description	Part No.	Index	Description	Part No.
	Handle Shaft Assembly	MT4-AD3	26	Barrel	MT4-4
1	Handle Shaft	MT4-D3	*	Warning Label	WARNING-6-99
2	Throttle Valve Bushing	MT4-503A	27	Fixed Nozzle	MT1-6
5	Handle Plug	MT4-33	28	Steel Retainer Parts	
7	Throttle Valve	MT4-402		Quick-Change Steel Retainer (Standard)	MT4-8
8	Throttle Valve Face	MT4-159	29	Loose Nozzle	MT1-7A
9	Throttle Valve Face Washer	MT4-156	30	Buffer	MT6-14
10	Throttle Valve Face Cap	R4-157	31	Buffer Washer	MT6-32
11	Valve Face Retaining Screw	4U-359	32	Barrel Bolt (2)	MP1-2
12	Retaining Screw Lock Washer	H54U-352	33	Handle Bolt (4)	H3R-9B
13	Throttle Valve Spring	T01-308	34	Barrel Bolt Nut or Handle Bolt Nut (6)	MT4-40
14	Throttle Handle	MT4-117	35	Plain Face Tie Tamper Steel	
15	Throttle Handle Nut	MT4-40		3/8" x 3" Face	MT2-12-3/8
16	Throttle Handle Washer	MT2-52		5/8" x 3" Face	MT2-12-5/8
17	Throttle Handle Stop Pin	MT2-59		3/4" x 3" Face	MT2-12-3/4
18	Stop Pin Spring	503-607		7/8" x 3" Face	MT2-12-7/8
19	Hose Coupling	F0-8-3/4"		1-1/8" x 3" Face	MT2-12-1-1/8
20	Gasket (2)	MT4-68A	*	Toothed Cinder Tamper Steel	MT2-C12-3/4
21	Lubricator Body	MT4-70	*	Toothed Stone Ballast Tamper Steel	MT2-S12-5/8
22	Oiler Adjusting Screw (2)	R2-71	*	Grease Gun	P25-228
23	Oiler Felt (8)	R2-75	43	Male Hose Coupling	MH-8-1/2
24	Oil Chamber Plug	P25-227	44	Female Hose Coupling	FH-8-3/4
25	Piston	MT4-5			

Tools Renewed Inc
 Tel: 800-247-3639
 Fax: 860-665-9821
 Email: sales@toolsrenewed.com
 Web: www.toolsrenewed.com