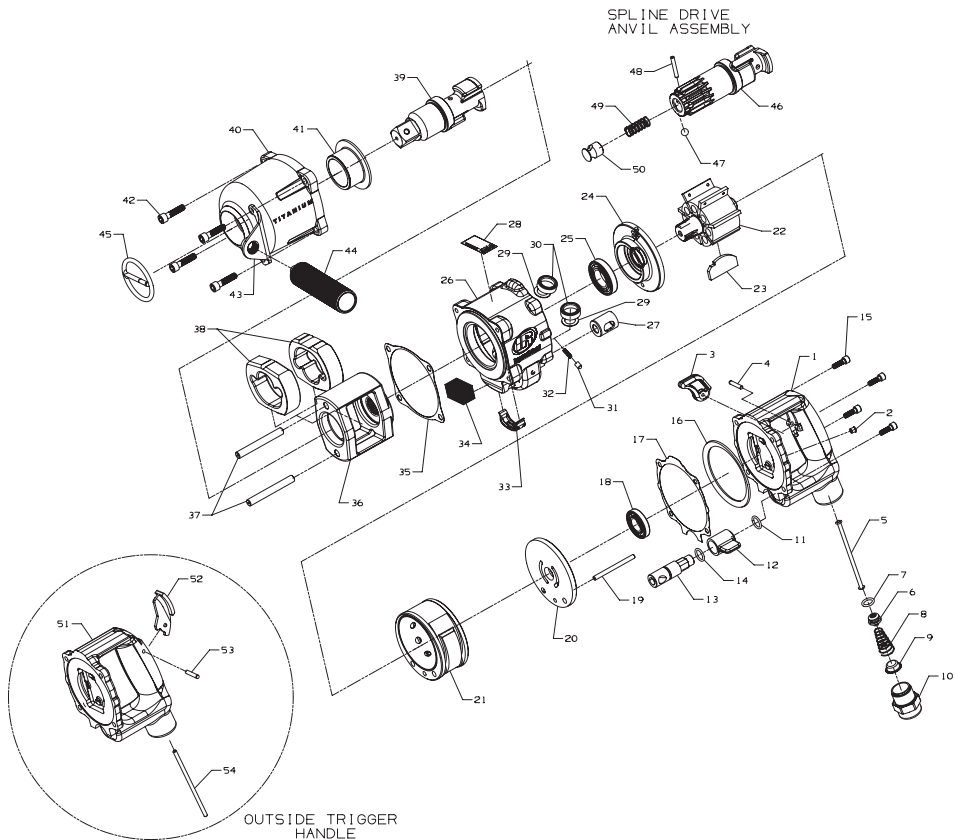


3940 and 3942 Series Air Impact Wrench Exploded Diagram



(Dwg. 16576084)

Tools Renewed, Inc
Tel: 800-247-3639
Fax: 860-665-9821
Email: sales@toolsrenewed.com

Form 10569390
Edition 1
November 2004

3940 and 3942 Series Air Impact Wrench Parts List

Item	Part Description	Part Number	Item	Part Description	Part Number
1	Inside Trigger Handle Assembly	3940-A92	† 29	Air Port Gasket Retainer (2)	2940-200
2	Grease Fitting	130SR-188	† • 30	Air Port Gasket (2)	R44H-210A
3	Trigger	3940-93	† 31	Reverse Lock Plunger	4U-663B
4	Trigger Pin	280-265	† 32	Reverse Lock Plunger Spring	4U-664
5	Throttle Valve Plunger	3940-302	33	Exhaust Deflector	
6	Throttle Valve Assembly	2934-A50		for 3940	3934-123
† • 7	Throttle Valve Seal	2934-159		for 3942	3940-123
† 8	Throttle Valve Spring	834-51	† 34	Exhaust Silencer	
† • 9	Air Strainer Screen	434-61		for 3940	3934P-311
10	Straight Inlet	845-565		for 3942	3940P-311
† • 11	Reverse Valve Seal	R00BR-210	† 35	Hammer Case Gasket	3940-36
12	Reverse Lever	3940-75	36	Hammer Frame Assembly	2940-A703
13	Reverse Valve		37	Hammer Pin (2)	2940-704
	for 3940	3934-329	38	Hammer (2)	2940-724
	for 3942	3940-329	39	1" Square Drive Anvil	
† • 14	Reverse Valve Bushing Seal	85H-167		Standard Length	2940-726
15	Handle Cap Screw (4)	3940-638		6" Extended Length	2940-314-6
16	Motor Clamp Washer	2934-207	40	Hammer Case Assembly	3940-D727
† • 17	Handle Gasket	3940-283	41	Hammer Case Bushing	2934-641
† 18	Rear Rotor Bearing	508-97	42	Hammer Case Cap Screw (4)	3940-105
19	Cylinder Dowel		43	Dead Handle Bracket	3940-364
	for 3940	3934-98	44	Dead Handle	3940-48
	for 3942	3940-98	45	Socket Retainer	RR10015S
20	Rear End Plate	2934-12	46	Spline Drive Anvil Assembly	2940-A526
21	Cylinder		47	Socket Retaining Ball	D04-280
	for 3940	2934-3	48	Plunger Retaining Pin	845-128
	for 3942	2940-3	49	Retaining Plunger Spring	2940-231
22	Rotor		50	Retaining Ball Plunger	845-230
	for 3940	3934-53	51	Outside Trigger Handle Assembly	3940-A1
	for 3942	3940-53	52	Trigger	844-78
† • 23	Vane Packet (set of 7 vanes)		53	Trigger Pin	280-265
	for 3940	2934-42-7	54	Throttle Valve Plunger	3940A-302
	for 3942	2940-42-7		Also includes illustrated parts	
24	Front End Plate	3940-11		(2, 5, 6, 7, 8, 9, 10 & 11)	
† 25	Front Rotor Bearing	810-97	*	Grease Gun	R000A2-228
26	Motor Housing		*	Tune-up Kit (includes illustrated parts 7,	
	for 3940	3934-40		8, 9, 11, 14, 17, 18, 23, 25, 29[2], 30[2],	
	for 3942	3940-40		31, 32, 34, 35, 47, 48, 49)	
27	Reverse Valve Bushing	3940-330		for 3940	3940-TK1
28	Warning Label for Impacttools	WARNING-2-99		for 3942	3942-TK1

* Not Illustrated.

† Indicates Tune-up Kit Part

• To keep downtime to a minimum, it is desirable to have on hand certain repair parts. We recommend that you stock one (pair or set) of each part indicated by a bullet (•) for every four tools in service.

Parts and Maintenance

When the life of the tool has expired, it is recommended that the tool be disassembled, degreased and parts be separated by material so that they can be recycled.

Tool repair and maintenance should only be carried out by an authorized Service Center.
Refer all communications to the nearest **Ingersoll-Rand** Office or Distributor.

Related Documentation

For additional information refer to:
Air Impact Wrench/Product Safety Information Manual 04580916, Air Impact Wrench Product Information Manual 10569382.

Manuals can be downloaded from www.irttools.com.

Tools Renewed, Inc
Tel: 800-247-3639
Fax: 860-665-9821
Email: sales@toolsrenewed.com

Form 10569390
Edition 1
November 2004