

CS UNITEC, INC.

### Spare Parts List

Description :

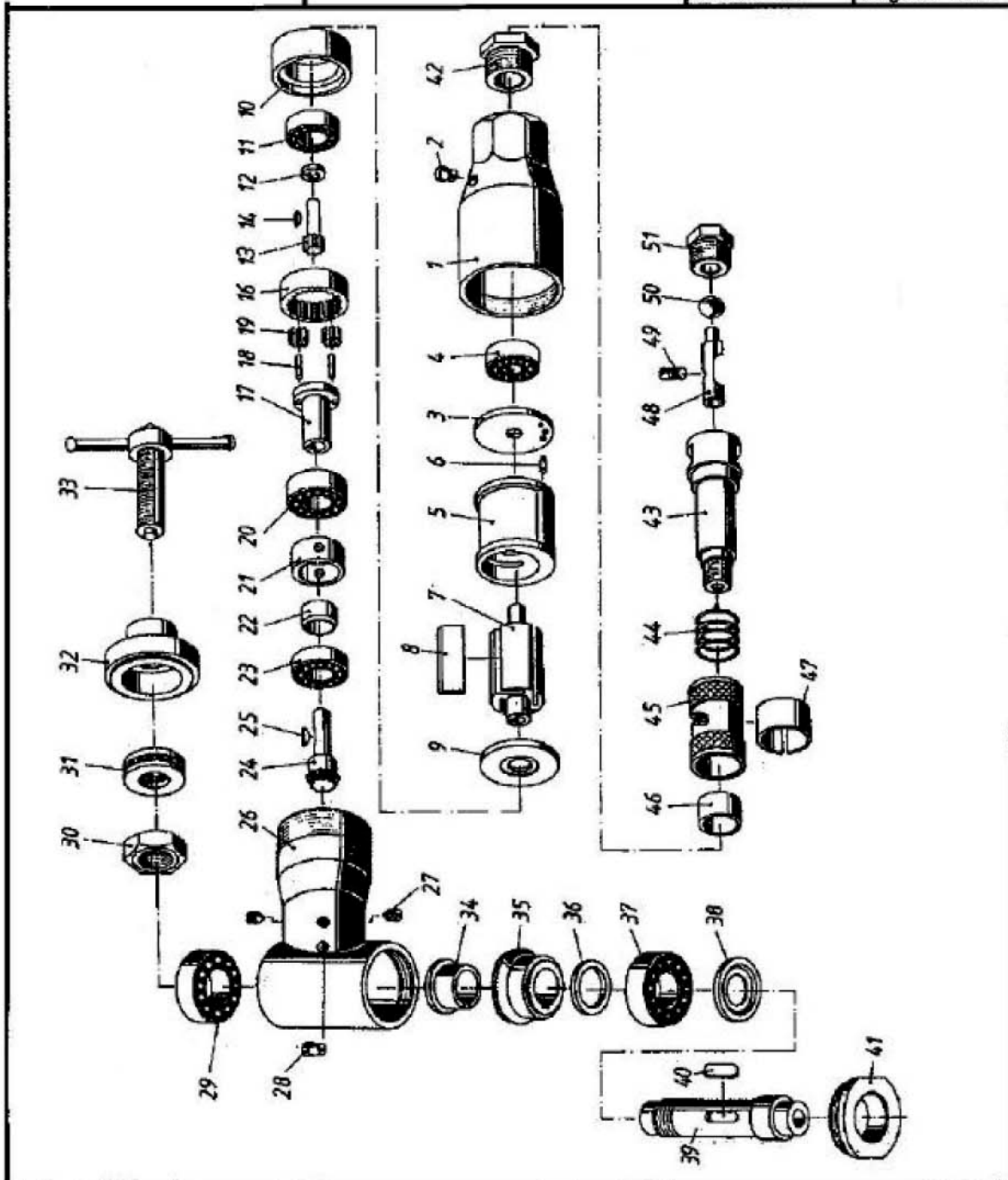
**Pneumatic Corner Drill**

Order Number .

**2 1602 0030**

Blatt-Nr. : 3/3

Ausgabe: 10/98



*Prices to change without notice.  
Not responsible for typographical errors.*

<b>POS. NO.</b>	<b>ITEM NO.</b>	<b>DESCRIPTION</b>	
11 + 23	9 1004 0020	Bearing	SEE # 107 832
2 + 28	9 3403 0010	Grease Nipple	
29 + 37	9 1004 0460	Grooved Ball Bearing	
1	2 1602 1010	Motor Housing	
3	2 1602 1100	End Plate	
4	9 1001 0090	Bearing	
5	2 1602 1020	Cylinder Bushing	
6	9 1637 0350	Locking Bolt	
7	2 1602 1030	Rotor	
8	2 1602 1050	Vane	
9	2 1602 1060	End Plate	
10	2 1602 1110	Bearing Disc	
12	2 1602 1090	Spacer	
13	2 1602 1040	Rotor Pinion	
14	9 1504 0120	Plate Spring	
16	2 1602 4020	Gear Rim	
17	2 1602 4030	Planetary Wheel Carrier	
18	2 1602 4050	Planetary Wheel Bolt	
19	2 1602 4040	Planetary Wheel	
20	9 1004 0030	Bearing	
21	2 1602 4070	Spacer Sleeve	
22	2 1602 4080	Bushing	
24	2 1602 4120	Bevel Gear Pinion	
25	9 1504 0040	Plate Spring	
26	2 1602 4010	Gear Box	
27	9 1139 4020	Threaded Pin	
30	9 1223 0800	Hexagon Nut	
31	9 1021 0040	Journal Bearing	
32	2 1602 7090	Feed Sleeve	
33	2 1602 7080	Feed Screw	
34	2 1602 4180	Spacer	
35	2 1602 4130	Bevel Gear	
36	9 3325 0790	Distance Washer	
38	9 1904 0020	Nilos Ring	
39	2 1602 7070	Spindle Sleeve	
40	9 1501 3070	Feather Key	
41	2 1602 3110	End Cover	
42	2 1602 3060	Connecting Nut	
43	2 1602 3010	Valve Body	
44	9 1808 0220	Spring	
45	2 1602 3020	Turning Sleeve	
46	2 1602 3080	Ring	
47	2 1602 3100	Clamping Ring	
48	2 1602 3320	Admission Valve	
49	9 1164 0220	Screw	

*Prices to change without notice.  
Not responsible for typographical errors.*

<u>POS. NO.</u>	<u>ITEM NO.</u>	<u>DESCRIPTION</u>
50	9 1018 0190	Ball
51	2 1602 3090	Sieve Carrier