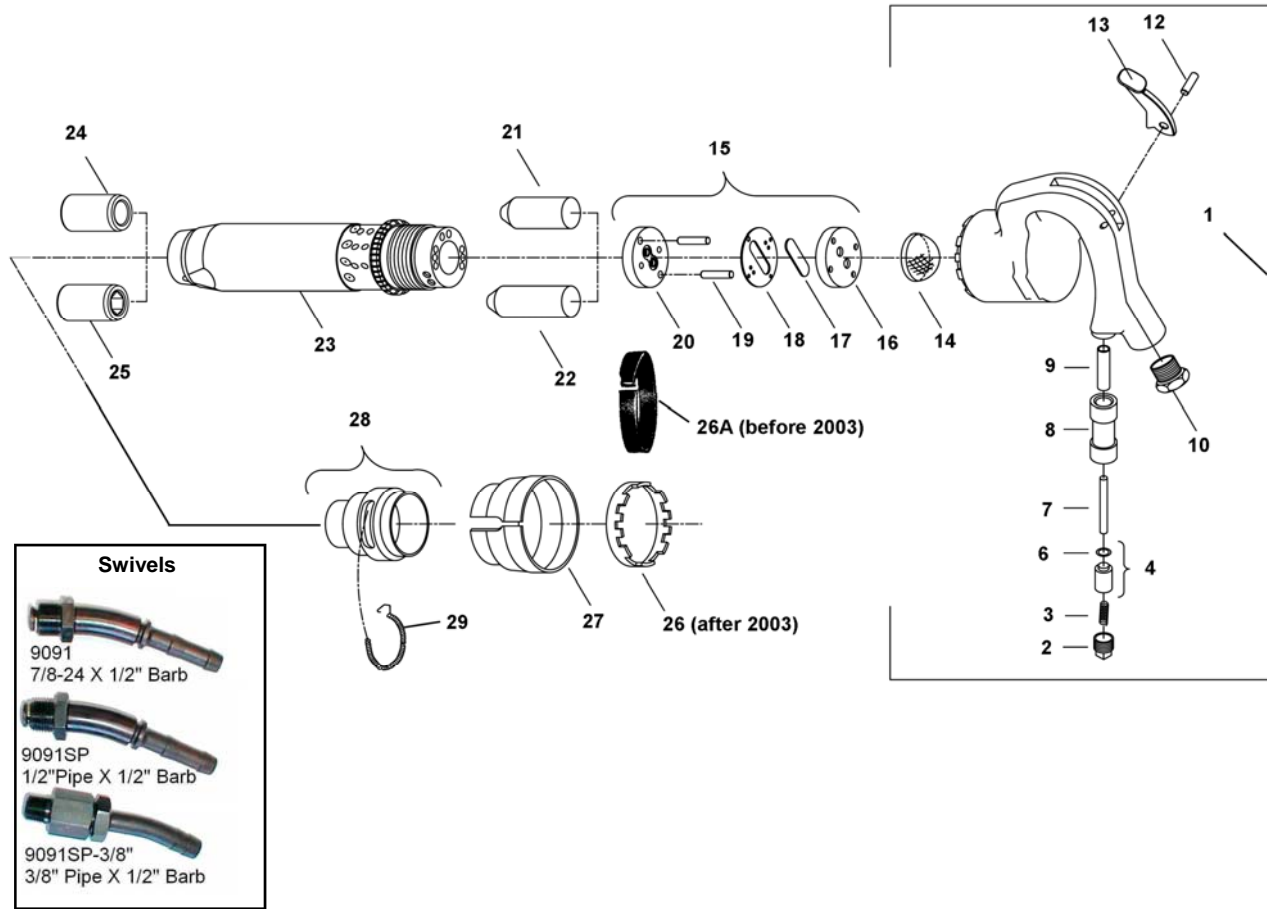


CHICAGO PNEUMATIC-4123 HEAVY CHIPPING HAMMER (15 lbs)
Model A (before 2003) Model B (after 2003)



Item No.	Part No.	Description	Item No.	Part No.	Description
1	Z9983830	Handle Assy - After 2003	16	P071350	Lid - Upper valve case
1A	P007976	Handle Assy - Before 2003	17	P071358	Valve
2	P001873	Plug - Throttle valve	18	P071352	Case - Valve
3	P001853	Spring - Throttle valve	19	A041797	Pin - Dowel
4	P001768	Valve - Throttle	20	P071351	Lid - Lower valve case
6	P083071	O-ring	21	P118662	Piston (for 2" or 3" stroke version)
7	P070719	Pin - Throttle valve bush	22	P118678	Piston (for 4" stroke version)
8	P071318	Tube - Throttle valve	24	P001550	Sleeve - Chisel (Round)
9	P070733	Bushing - Push pin	25	P001551	Sleeve - Chisel (Hex)
10	P009585	Bushing - Permanent	26	P128247	Collar - Lock - After 2003
12	A043627	Pin - Throttle lever	26A	P071354	Lock Clip - Before 2003
13	P009818	Lever - Throttle	27	P071355	Shield - Lock
14	P092485	Screen	28	P107243	Sleeve - Retainer
15	P077013	Valve case complete (Items 16 - 20)	29	P070994	Spring - Lock coil