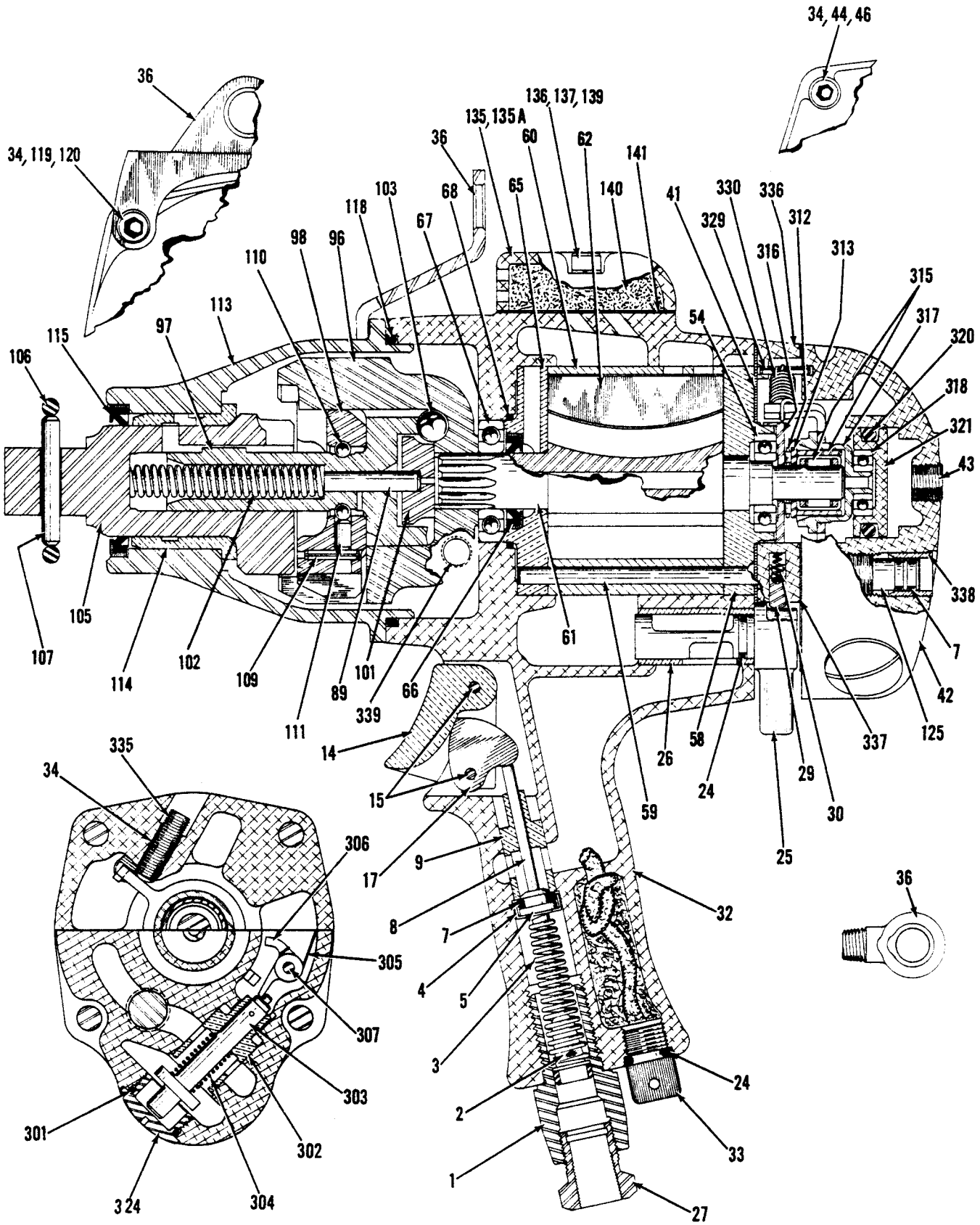


CP-0606 REVERSIBLE TORQUE CONTROL IMPACT WRENCH Model "D"



All Threads Are Right Hand Unless Otherwise Specified.

CP-0606 REVERSIBLE TORQUE CONTROL IMPACT WRENCH Model "D"

Index No.	CP Part No.	Description	No. Req'd.	Index No.	CP Part No.	Description	No. Req'd.
1	C-112802	Cap-Throttle (Incl: Index No. 2)	1	106		Retainer-Pin (See Page 12)	1
2	C-126694	Strainer-Air	1	107		Pin-Retainer (See Page 12)	1
3	C-056670	Spring-Throttle	1	109	G-002865	Pin-Roll (1/8" x 5/8")	1
4	CA-052537	Retainer-"O" Ring	1	110	C-014143	Ball-Steel (7/32" Dia.)	10
5	CA-048428	Valve-Throttle	1	111	C-042711	Pin-Ball Retainer	1
7	C-100130	"O" Ring (-010)	3		C-126458	Housing-Clutch (Steel) (Incl: Index No's. 114 & 115)	
8	C-054866	Stem-Throttle	1	113	**C-111475	Housing-Clutch (Alum.) (Incl: Index No's. 114 & 115)	1
9	C-069010	Bushing-Throttle Valve	1		**C-111479	Housing-Clutch (Alum.) (Plastisol*) (Incl: Index No's. 114 & 115)	
14	C-056668	Trigger	1	114	C-042714	Bushing-Clutch Housing	1
15	C-056671	Pin-Throttle	2	115	S-086549	Seal-Oil	1
17	C-056669	Link-Throttle	1	118	C-105686	"O" Ring (-151)	1
24	A-082777	"O" Ring (-012)	2	119	P-070425	Screw-Allen Cap (1/4" - 20 x 1")	4
25	C-056848	Valve-Reverse	1		P-070320	Wrench-Allen (3/16" Hex.)	1
26	C-042706	Bushing-Reverse Valve (Unreamed, Use Std. 1/2" reamer)	1	120	S-000271	Lockwasher (1/4" Med.)	4
27	P-002525	Bushing-Reducing	1	125	C-056860	Screw-Air Regulator	1
29	C-042724	Pin-Reverse Valve Stop	1	135	C-123243	Deflector-Exhaust	1
30	C-046638	Spring-Stop Pin	1	135A	C-126040	Box-Exhaust (for piped away exhaust) (Not Shown)	1
32	C-111474	Housing-Motor (Incl: Index No's. 9, 26, 8 of 34 & 139)	1	136	C-088193	Screw-Allen Cap (#10 - 24 x 7/8")	2
	C-111477	Housing-Motor (Plastisol*) (Incl: No's. 9, 26, 8 of 34 & 139)	1		P-070493	Wrench-Allen (5/32" Hex.)	1
33	C-085233	Plug-Oiler	1	137	S-091250	Lockwasher #10	2
34	C-094476	Insert-Heli-Coil	9	139	C-106106	Insert-Heli-Coil	2
36	C-045380	Bail-Suspension (Horizontal)	1	140	C-124081	Foam-Deflector	1
	C-056666	Bail-Suspension (Vertical)	1	141	C-123245	Gasket-Deflector	1
41	C-056850	Gasket-Motor Housing	1	301	C-045689	"O" Ring (-016)	1
42	C-120141	Housing-Torque (Incl: No's. 302, 338 and 1 of 34)	1	302	C-106817	Bushing-Cut Off Valve	1
43	C-068064	Plug-Pipe (1/8" Hex.)	1	303	C-056859	Valve-Cut Off	1
	P-070320	Wrench-Allen (3/16" Hex.)	1	304	C-094845	Spring-Valve	1
44	C-065376	Screw-Allen Cap (1/4" - 20 x 1 1/4")	4	305	C-056855	Spring-Toggle	1
	P-070320	Wrench-Allen (3/16" Hex.)	1	306	C-056857	Toggle-Cut Off	1
46	C-012058	Lockwasher (1/4")	4	307	C-056856	Shaft-Toggle	1
54	C-066342	Bearing-Ball	1	312	C-046994	Bearing-Thrust	1
58	C-111317	Plate-Rear End	1	313	C-120126	Race-Bearing	1
59	C-105683	Dowel-Liner	1	315	C-121854	Clutch Assy-One Way	1
60	C-105690	Liner	1	316	C-120125	Retainer-Bearing	1
61	C-120139	Rotor (12 Teeth)	1	317	C-120121	Arm-Lever	1
62	C-105681	Blade-Rotor	6	318	S-065412	Bearing-Ball	1
65	C-105688	Plate-Front End	1	320	C-084172	"O" Ring (-214)	1
66	C-087936	Seal-Oil	1	321	C-046861	Piston	1
67	C-068659	Bearing-Ball	1	324	C-056858	Plug-Valve	1
68	P-053515	"O" Ring (-027)	1	329	C-089798	Pin-Roll (3/32" x 9/16")	1
89	C-042712	Pin-Thrust	1	330	C-046855	Spring-Lever	1
96	C-109812	Hammer	1	335	C-045835	Screw-Torque Adjustment (1/4" - 20 x 7/8")	1
97	C-109813	Spindle	1		R-009300	Wrench-Allen (1/8" Hex.)	1
98	C-042731	Dog (Incl: No. 109)	1	336	C-056847	Plate-Housing	1
101	C-109811	Button-Thrust	1	337	C-056851	Gasket-Control Housing	1
102	C-042716	Spring-Release	1	338	C-102902	Bushing-Air Regulator	1
103	C-011086	Ball (3/8" Dia.)	1	339	C-054897	Plug-Pipe (1/8")	1
105		Shank-Anvil (See Page 12)	1				

**Spare Parts Only

*Plastic Coated To Resist Abrasion.