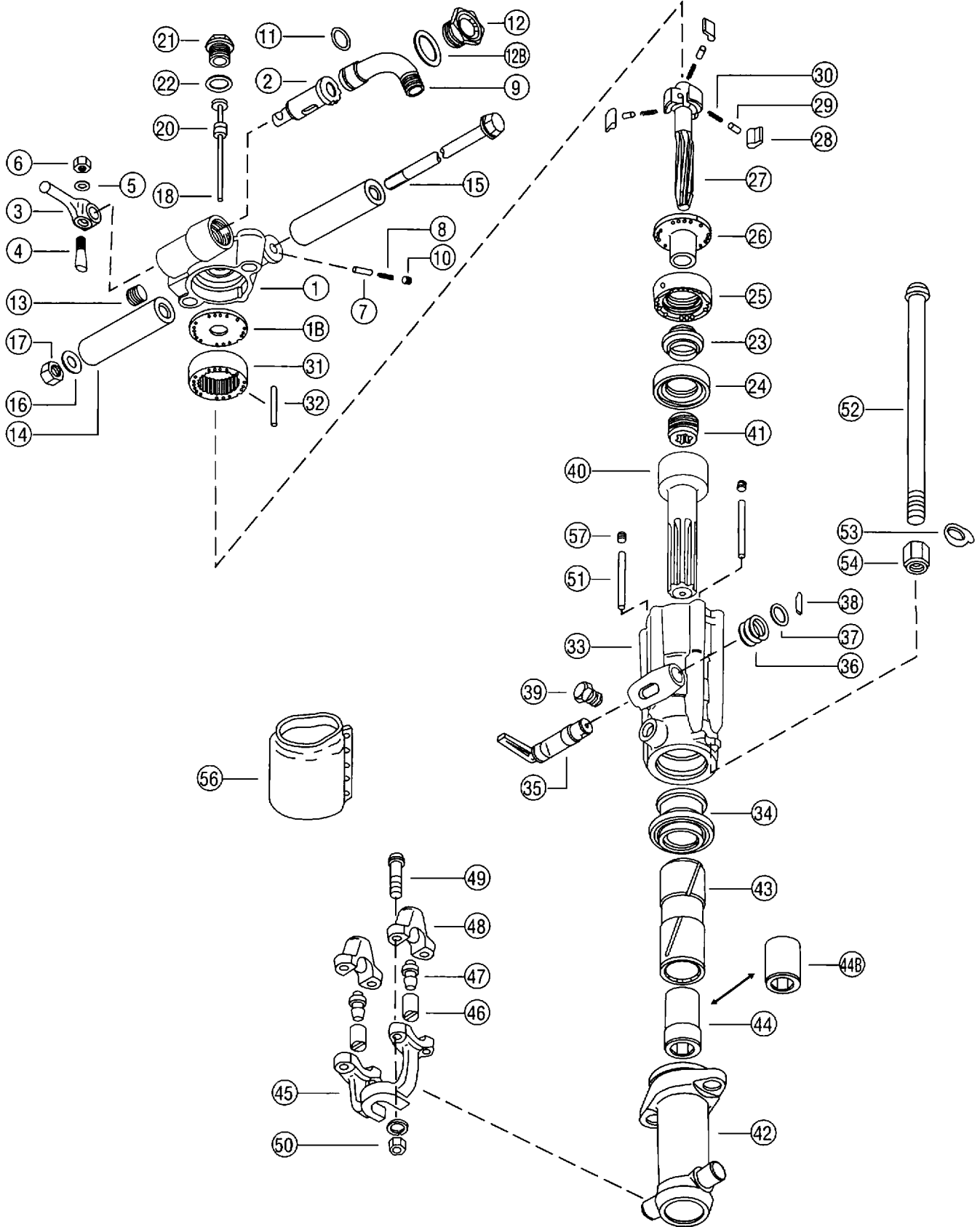


MODEL CRD-75

CONTINENTAL POWER TOOLS

ROCK DRILL



CONTINENTAL POWER TOOLS

MODEL CRD-75

ROCK DRILL

INDEX NO.	PART NO.	DESCRIPTION	QUAN. REQD.
1	7701	Back Head w/Bushing	1
1-B	7701-B	Back Head Bushing	1
2	7702	Throttle Valve	1
3	7703	Throttle Valve Handle	1
4	7704	Throttle Valve Handle Bolt	1
5	7705	Throttle Valve Handle Washer	1
6	7706	Throttle Valve Handle Bolt Nut	1
7	7707	Throttle Valve Plunger	1
8	7708	Throttle Valve Plunger Spring	1
9	7709	Air Inlet Swivel	1
10	7710	Plug	2
11	7711	Swivel O-Ring	1
12	7712	Swivel Nut	1
12-B	7712-B	Swivel Nut O-Ring	1
13	7713	Back Head Plug	1
14	7714	Handle Grip Complete	2
15	7715	Handle Bolt	1
16	7716	Handle Bolt Washer	2
17	7717	Handle Bolt Nut	1
18	7718	Blow Tube	1
20	7720	Blow Tube Rubber Seal	1
21	7721	Blow Tube Gland	1
22	7722	Blow Tube Gasket	1
23	7723	Automatic Valve	1
24	7724	Front Valve Chest	1
25	7725	Rear Valve Chest	1
26	7726	Valve Guide	1
27	7727	Rifle Bar	1
28	7728	Rotation Pawl	3
29	7729	Pawl Plunger	3
30	7730	Pawl Spring	3
31	7731	Ratchet Ring	1
32	7732	Valve Dowel Pin	1
33	7733	Cylinder	1
34	7734	Front Washer Bushing	1
35	7735	Exhaust Valve	1
36	7736	Exhaust Valve Spring	1
37	7737	Exhaust Valve Washer	1
38	7738	Exhaust Valve Pin	1
39	7739	Oil Plug	1
40	7740	Piston	1
41	7741	Rifle Nut	1
	7741-S	Rifle Nut Steel - Option	(1)
42	7742	Front Head	1
43	7743	Chuck Driver	1
44	7744	Chuck Bushing (1" x 4-1/4")	1
44-B	7744-S	Chuck Bushing (7/8" x 3-1/4")	1
	7755	Chuck Bushing (7/8" x 4-1/4")	1
45	7745	Steel Retainer (1" or 7/8" x 4-1/4")	1
	7745-S	Steel Retainer (7/8" x 3-1/4")	1
46	7746	Steel Retainer Plunger	2
47	7747	Retainer Spring	2
48	7748	Steel Retainer Cap	2
49	7749	Steel Retainer Bolt	4
50	7750	Steel Retainer Bolt Nut	4
51	7751	Oil Control Felt	2
52	7752	Side Rod	2

INDEX NO.	PART NO.	DESCRIPTION	QUAN. REQD.
53	7753	Side Rod Lock Washer	2
54	7754	Side Rod Bolt Nut	2
56	7756	Muffler - Option	(1)
57	7757	Oil Control Plug	1