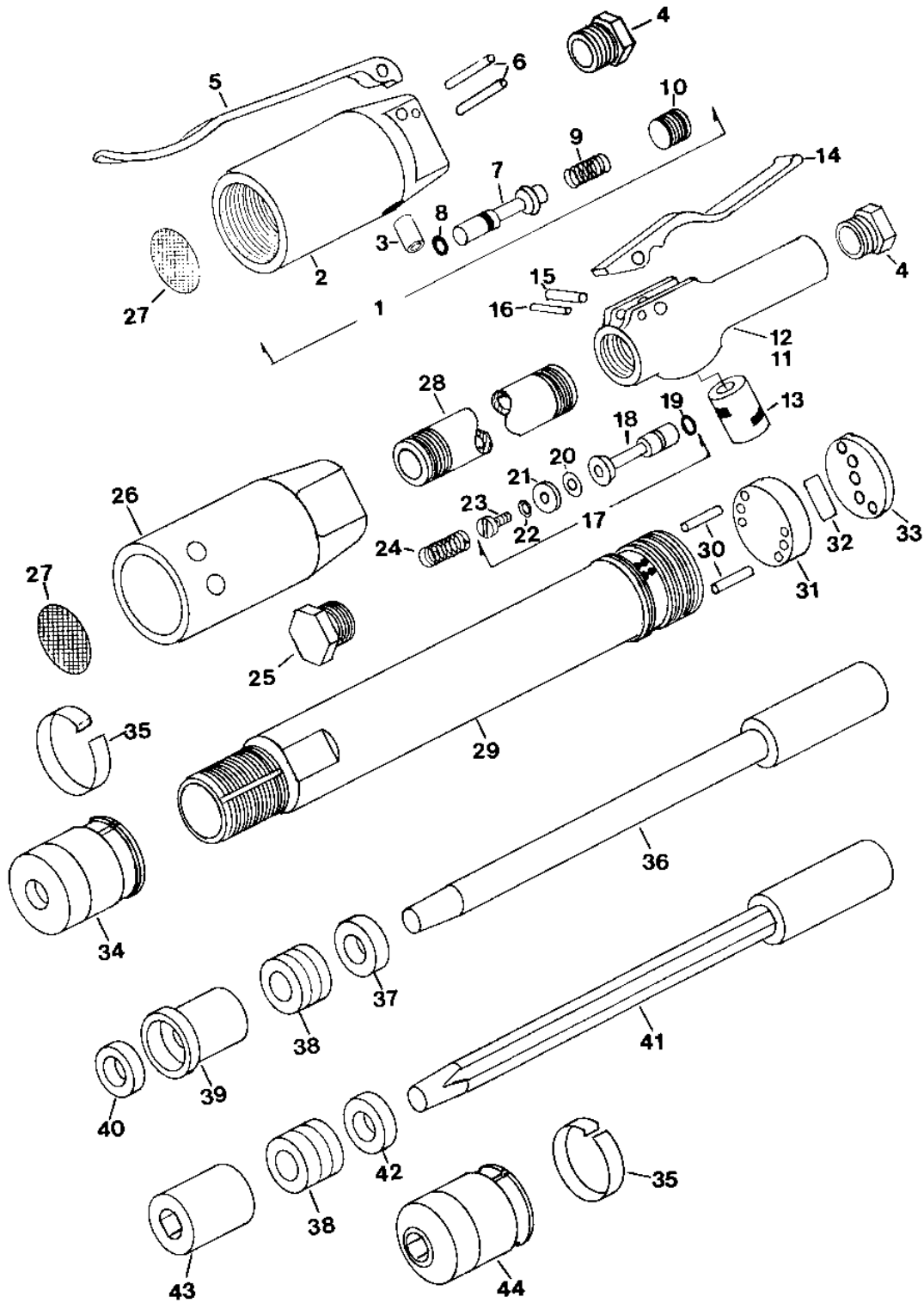


# ATSCO

## 1BA,1BAF,2BA,2BAF RAMMERS



For Parts Call Tools Renewed (800) 247-3639 Fax (860) 665-9821

**PARTS LIST FOR  
ATSCO 1BA, 2BA, 1BAF, 2BAF RAMMERS**

Item No.	ATSCO No.	B&D No.	Description
1	87A-2BA	695540	Backhead Complete (Bench Rammer)
2	87-2BA	695539	Head
3	27-2BA	695546	Throttle Valve Bushing
4	45-2F	696286	Inlet Bushing
5	31-2BA	695542	Throttle Valve Lever
6	92-4	695773	Throttle Lever Pin (2)
7	25-1BA	695545	Throttle Valve
8	93-8	696930	O Ring
9	26-2BA	695547	Throttle Valve Spring
10	30-2BA	696078	Throttle Valve Spring Plug
11	69A-24	696275	Handle Assembly (Floor Rammer)
12	69-24		Handle Bare (Not avail. separately)
13	27-24		Throttle Valve Bushing
14	31-24		Throttle Lever
15	2250-1000	696278	Throttle Lever Pin
16	2187-1000	99210-18	Lever Stop Pin
17	91-24	696284	Valve Assembly
18	25-24	696282	Valve Stem
19	93-12	61145	O Ring
20	93-110	59577	O Ring
21	25A-24	696283	Cap
22	24-510	697163	Washer
23	25B-24	697162	Screw
24	26-24	696280	Valve Spring
25	30-24	696281	Throttle Valve Cap
26	87-1BA	695586	Rear Head
27	95-2BA	695538	Screen
28	35-4	696266	Pipe Extension
29	90A-1BA	695531	Cylinder (1BA)
	90A-2BA	695564	Cylinder (2BA)
30	56-2BA	695537	Valve Block Dowel Pin (2)
31	53-2BA	695534	Valve Block
32	54-2BA	695532	Valve
33	52-2BA	695533	Valve Block Lid
34	6-2BA	695549	Packing Nut
35	9-2BA	695553	Packing Nut Lock Clip
36	2-1BA	695525	Piston (1BA)
	2-2BA	695556	Piston (2BA)
37	4-2BA	695551	Packing Gland Washer
38	3-2BA	695552	Packing Set
39	5-1BA	695550	Packing Gland Bushing (1BA)
	5-2BA	695566	Packing Gland Bushing (2BA)
40	5S-1BA	700073	Rod Wiper
41	2-1BAF	695569	Flatted Piston (1BA)
	2-2BAF	695577	Flatted Piston (2BA)
42	4-1BAF	695584	Flatted Packing Gland Washer
43	5-1BAF	695575	Flatted Packing Gland Bushing (1BA)
	5-2BAF	695583	Flatted Packing Gland Bushing (2BA)
44	6-2BAF	695585	Flat Rod Packing Nut

Accessories not illustrated

10-2BA	718672	1-5/8" Rubber Butt
10-1	718676	2-1/2" Rubber Butt
10-205-4	718686	5" Rubber Butt
10P-1BA	718675	2-3/8" X 1/4" Rubber Tipped Pein

(OTHER SIZES AVAILABLE ON REQUEST)

**SERVICE INSTRUCTIONS**

1. Before putting the tool in service, remove dust plug from the inlet and pour 1 to 2 tablespoons of 5 or 10 wt. machine oil in the inlet. Attach a clean air hose and operate the tool for 10 to 20 seconds. Wipe off excess oil from the outside of the tool and the exposed piston rod and the tool is ready for service.

2. Provide clean, dry air @ 90 PSI with a 3/8 ID hose.

3. After each hour of actual running time, remove air line and pour 1 teaspoon of 5-10 wt. oil in the inlet. Under normal use this is about 2 to 3 times daily. A well maintained line oiler will provide a continuous oil mist to the tool during operation and will add many hours of trouble free service.

4. If the rammer becomes sluggish and lubrication does not solve the problem, check inlet screens for excessive blockage of the air supply. Also move the piston up and down by hand. An air cushion should be apparent on each end of the stroke. The absence of the cushion indicates the need for packing adjustment, replacement or wear on internal parts.

To adjust packing, remove lock clip, hand tighten the packing nut until the tool slows perceptibly. Back off the nut until the tool resumes normal speed. Check for cushion.

If the problem cannot be solved by the above adjustment, parts replacement are usually necessary.

**DISMANTLING & ASSEMBLY  
INSTRUCTIONS**

1. Remove butt from the end of piston by placing an open end wrench on top of the small end of the butt and around the piston rod. One or two solid blows with a hammer is usually sufficient to loosen the butt.

2. With a screwdriver, lift the packing nut lock clip. The packing nut can then be unscrewed.

3. The piston can then be drawn out of the cylinder, bringing with it the packing gland, packing and packing gland washer. Examine packing and if worn, replace with a new set.

4. By placing the two flats on the lower end of the cylinder in a soft jawed vise, taking care not to squeeze the cylinder out of round, the complete rearhead may be unscrewed. This will expose the valve block unit.

5. Clean out the main valve slot carefully and thoroughly. Do likewise with the strainer screen.

6. To clean out throttle valve, remove throttle valve spring plug. Clean out this area thoroughly.

7. To reassemble, reverse the above procedure, taking special care that all parts are thoroughly clean and oiled with clean, light #10 acid free lubricating oil. A small chip or piece of dirt can easily hamper the efficient operation of the tool.

**CAUTION**

**DO NOT OPERATE A RAMMER  
WITHOUT EYE PROTECTION**

Use adequate EAR PROTECTION if required