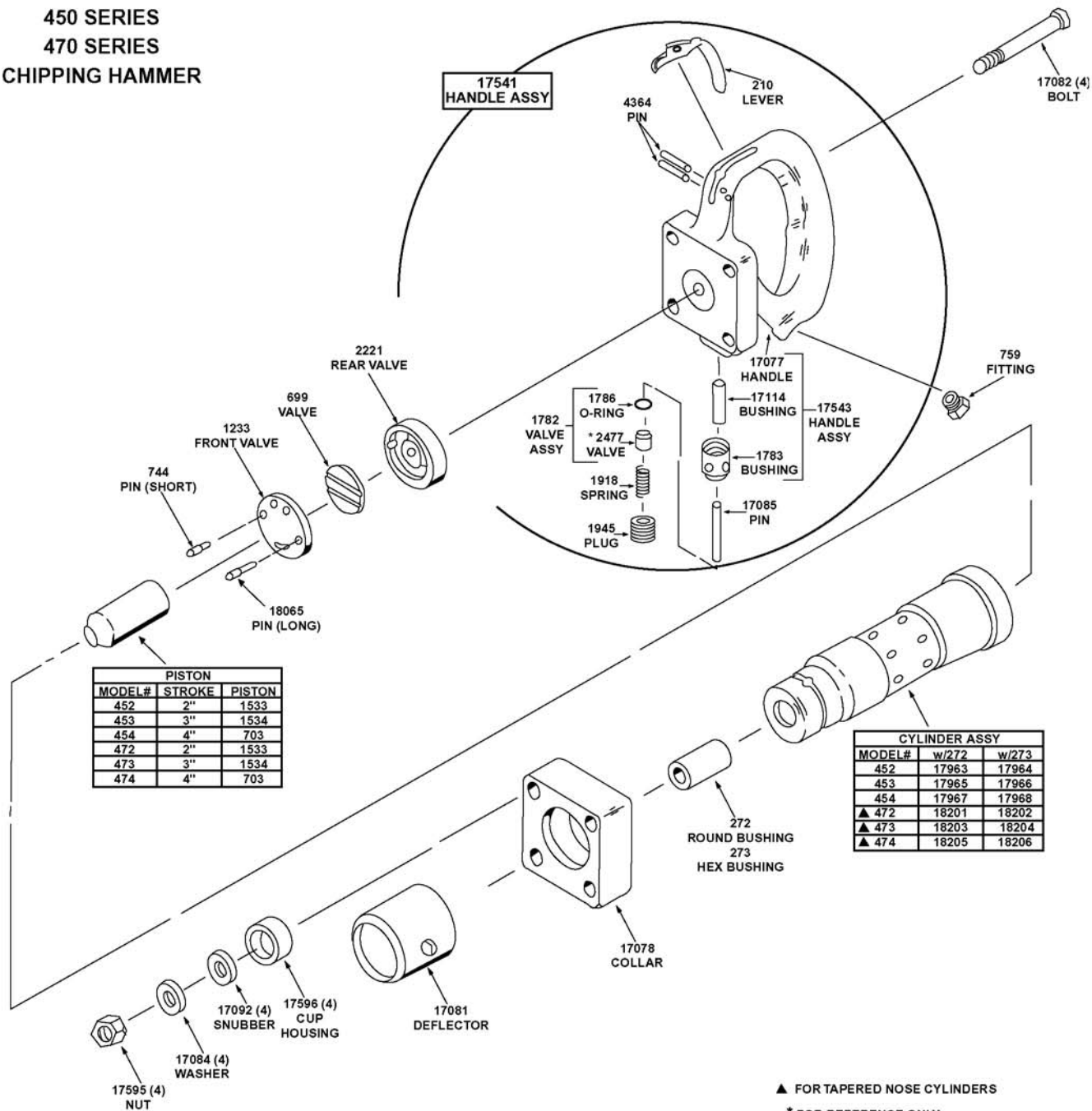


# AMERICAN PNEUMATIC TOOL

APT MODEL  
 450 SERIES  
 470 SERIES  
 CHIPPING HAMMER

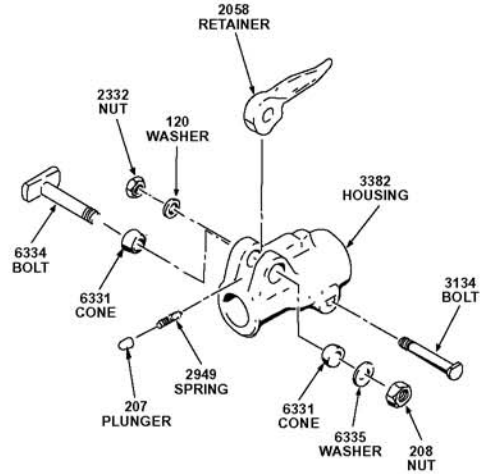
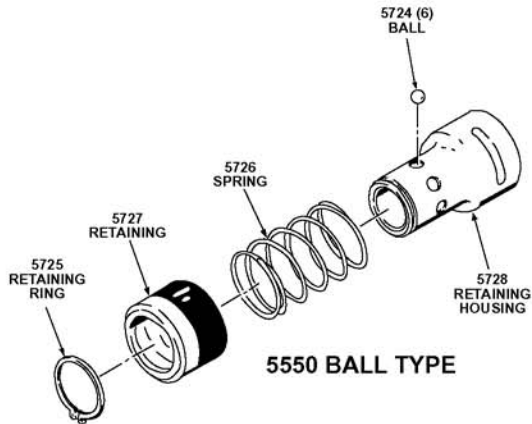
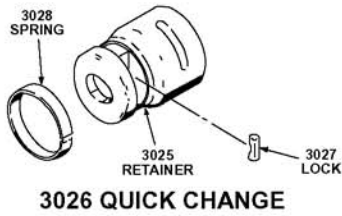


▲ FOR TAPERED NOSE CYLINDERS  
 \* FOR REFERENCE ONLY  
 (THESE PARTS NOT SOLD SEPARATELY)

Tools Renewed Inc  
 Tel: 800-247-3639 Fax: 860-665-9821  
 Web: [www.toolsrenewed.com](http://www.toolsrenewed.com) Email: [sales@toolsrenewed.com](mailto:sales@toolsrenewed.com)

# AMERICAN PNEUMATIC TOOL

## OPTIONAL RETAINERS (FOR APT STRAIGHT-NOSE CHIPPING HAMMERS)

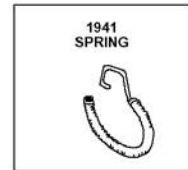


### 3383 LATCH-TYPE IMPORTANT

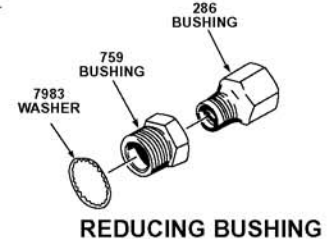
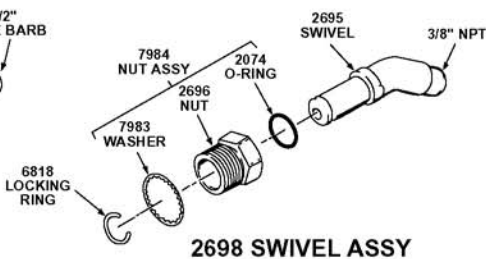
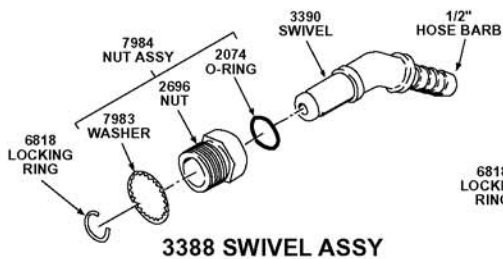
DO NOT USE 3383 Latch-type Retainer with .580 hex-shank chipping hammer steel. The latch does not properly catch the round collar, thereby allowing the steel to shoot out of the chipping hammer. This retainer (3383 Assy) should only be used with .680 round collar or round shank steel only.



### OPTIONAL RETAINER (FOR APT TAPERED-NOSE CHIPPING HAMMERS)



## OPTIONAL FITTINGS



Tools Renewed Inc

Tel: 800-247-3639 Fax: 860-665-9821

Web: [www.toolsrenewed.com](http://www.toolsrenewed.com) Email: [sales@toolsrenewed.com](mailto:sales@toolsrenewed.com)